

B-TUBULIN PAB

产品名称: β -Tubulin 兔多抗

货号: 21089

基因符号: TUBB

描述: β -Tubulin 兔多抗

背景: There are five members of the tubulin family (α , β , γ , δ , and ϵ). The most common members are α and β tubulins which form heterodimers as the basic structural unit of microtubules.

免疫原: A synthetic peptide from the internal region of human β -tubulin 蛋白

经过测试的应用: ELISA, WB, IHC, IP

推荐稀释比:

ELISA: 1:100–1:5000

WB: 1:100–1:1000

IHC: 1:50–1:100

Concentration: 0.2 mg/ml

种属反应性: Rabbit

形式: Liquid

克隆性: Polyclonal

亚型: IgG

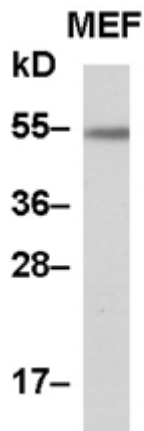
纯化: Purified from serum

成分: PBS (without Mg^{2+} and Ca^{2+}), pH 7.4, 150 mM NaCl, 50% glycerol

种属反应性: β -Tubulin antibody recognizes β -tubulin proteins from vertebrates.

储存条件: Store at $-20^{\circ}C$. Avoid repeated freezing and thawing

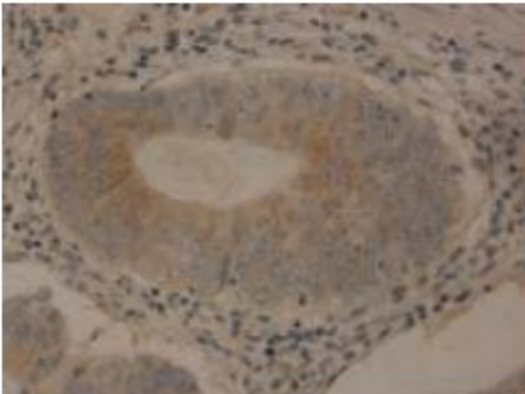
蛋白质印迹:



WB: anti-TUBB pAb

MEF whole-cell lysate was used for Western blot with anti- β -tubulin 兔多抗 (Cat # 21089).

Immunohistochemistry:



Immunohistochemical staining of formalin-fixed paraffin-embedded colon carcinoma using the affinity purified Anti- β -tubulin 兔多抗 (Cat# 21089) with a 1:50 dilution.