

PSMA MAB (ROSOPATAMAB)

货号: 28123

产品全名: PSMA(Rosopatamab) 单抗

基因符号 FGCP;FOLH;GCP2;GCPII;mGCP;NAALAD1;NAALAdase;PSM

描述: PSMA(rosopatamab) 单抗

背景: Research grade biosimilar. Not for use in therapeutic or diagnostic procedures for humans or animals.

经过测试的应用: ELISA; Flow Cyt

推荐稀释比: ELISA 1:5000-10000; Flow Cyt 1:100

种属反应性: Chimeric

亚型: IgG1

纯化: Purified from cell culture supernatant by affinity chromatography

种属反应性: 人 PSMA

成分: Lyophilized from sterile PBS, pH 7.4. 5% – 8% trehalose is added as protectants before lyophilization.

储存和运输: Store at -20°C to -80°C for 12 months in lyophilized form. After reconstitution, if not intended for use within a month, aliquot and store at -80°C (Avoid repeated freezing and thawing).

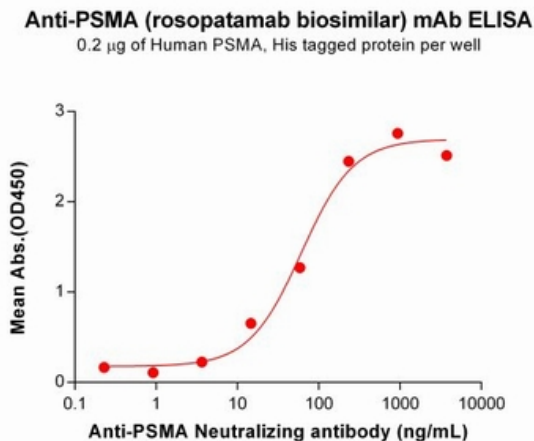


Figure 1. ELISA plate pre-coated by $2\ \mu\text{g}/\text{mL}$ ($100\ \mu\text{l}/\text{well}$) Human PSMA Protein, His Tag 11345 can bind Anti-PSMA Neutralizing antibody (28123) in a linear range of 3.66-234.38 ng/mL.

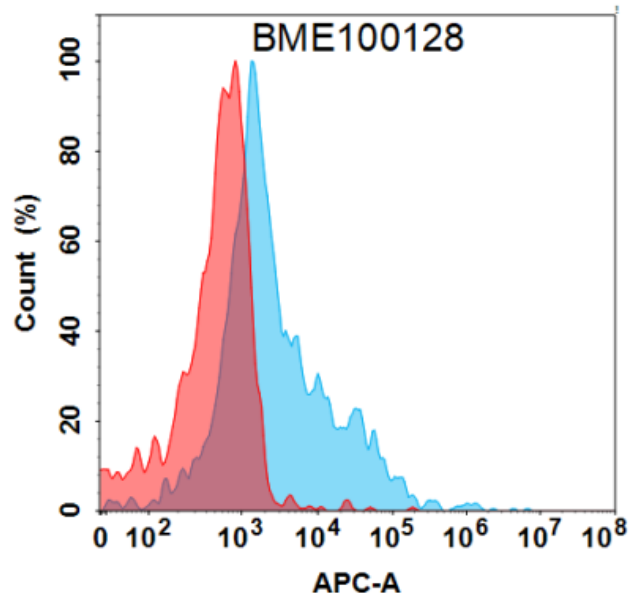


Figure 2. Flow cytometry analysis with $15\ \mu\text{g}/\text{mL}$ Anti-PSMA (rosopatamab biosimilar) mAb (28123) on Expi293 cells transfected with Human PSMA protein (Blue histogram) or Expi293 transfected with irrelevant protein (Red histogram).