

## CD20 MAB (RITUXIMAB)

货号: 28034

产品全名: CD20 (Rituximab) 单抗

基因符号 BI;Bp35;CD20;CVID5;LEU-16;MS4A2;S7

描述: CD20 (rituximab) 单抗

背景: Research grade biosimilar. Not for use in therapeutic or diagnostic procedures for humans or animals.

经过测试的应用: Flow Cyt

推荐稀释比: Flow Cyt 1:100

种属反应性: Chimeric

亚型: IgG1

纯化: Purified from cell culture supernatant by affinity chromatography

种属反应性: 人 CD20

成分: Lyophilized from sterile PBS, pH 7.4. 5 % – 8 % trehalose is added as protectants before lyophilization.

储存和运输: Store at  $-20^{\circ}\text{C}$  to  $-80^{\circ}\text{C}$  for 12 months in lyophilized form.

After reconstitution, if not intended for use within a month, aliquot and store at  $-80^{\circ}\text{C}$  (Avoid repeated freezing and thawing).

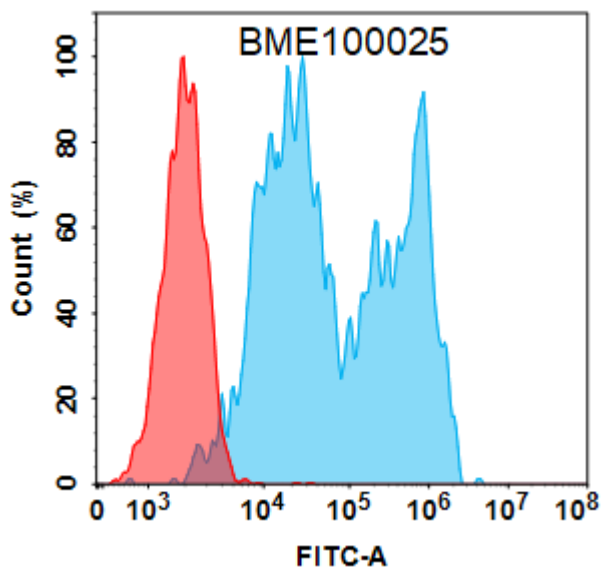


Figure 1. Flow cytometry analysis with  $2\ \mu\text{g}/\text{mL}$  Anti-CD20 (rituximab biosimilar) mAb (28034) on Expi293 cells transfected with Human CD20 protein (Blue histogram) or Expi293 transfected with irrelevant protein (Red histogram). antibody.



# Product Description

Pioneering GTPase and Oncogene Product Development since 2010

---