

RAL PAB

产品名称: Ral 兔多抗

货号: 21150

基因符号: RAL

描述: Ral 兔多抗

背景: The Ras-like small G proteins, RalA/B, are important components of Ras signaling pathways, implicated in the initiation and maintenance of tumorigenic transformation, as well as vesicle transport, apoptosis, transcription, cell migration, and cell proliferation.

免疫原: Two synthetic peptides from the internal regions of RalA and RalB proteins.

经过测试的应用: ELISA, WB, IHC, IP

推荐稀释比: ELISA: 1:100-1:5000WB: 1:100-1:2000IHC: 1:100-1:1000

Concentration: 0.2 mg/ml

种属反应性: Rabbit

形式: Liquid

克隆性: Polyclonal

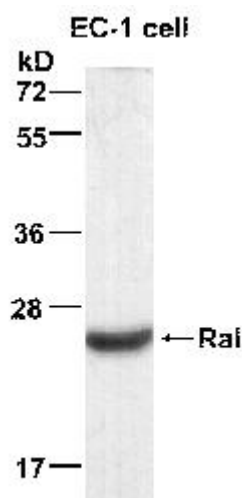
亚型: IgG

纯化: Purified from serum

成分: PBS (without Mg^{2+} and Ca^{2+}), pH 7.4, 150 mM NaCl, 50% glycerol

种属反应性: Ral antibody recognizes RalA and RalB from vertebrates.

储存条件: Store at $-20^{\circ}C$. Avoid repeated freezing and thawing



蛋白质印迹: WB: anti-Ral pAb EC-1 cell lysate was used for Western blot with anti RalA 兔多抗 (cat # 21150).



Product Description

Pioneering GTPase and Oncogene Product Development since 2010
