

## RAB31 PAB

产品名称: Rab31 兔多抗

货号: 21063

基因符号: RAB31

描述: Rab31 兔多抗

背景: Rab31 is a member of the Rab-subfamily of Ras-related small GTPases, and plays a role in the trans-Golgi network to endosome trafficking.

免疫原: A synthetic peptide from the C-terminal region of human Rab31

经过测试的应用: ELISA, WB, IHC, IP

推荐稀释比:

ELISA: 1:100-1:5000

WB: 1:200-1:2000

IHC: 1:10-1:500

**Concentration:** 0.2 mg/ml

种属反应性: Rabbit

形式: Liquid

克隆性: Polyclonal

亚型: IgG

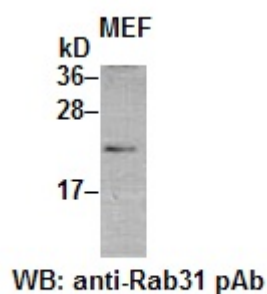
纯化: Purified from serum

成分: PBS (without  $Mg^{2+}$  and  $Ca^{2+}$ ), pH 7.4, 150 mM NaCl, 50% glycerol

种属反应性: Rab31 antibody recognizes Rab31 from vertebrates.

储存条件: Store at  $-20^{\circ}C$ . Avoid repeated freezing and thawing

蛋白质印迹:



MEF cell lysate was used for Western blot with anti Rab31 兔多抗 (cat # 21063).

