

## RAB25 PAB

产品名称: Rab25 兔多抗

货号: 21056

基因符号: RAB25

描述: Rab25 兔多抗

背景: Ras-related protein Rab25 is involved in recycling vesicles. It has been associated with the progression and aggressiveness of certain tumors.

免疫原: A synthetic peptide from the internal region of human Rab25 蛋白

经过测试的应用: ELISA, WB, IHC

推荐稀释比: ELISA 1:100-1:5000

WB 1:100-1:1000

IHC 1:100-1:1000

**Concentration:** 0.2 mg/ml

种属反应性: Rabbit

形式: Liquid

克隆性: Polyclonal

亚型: IgG

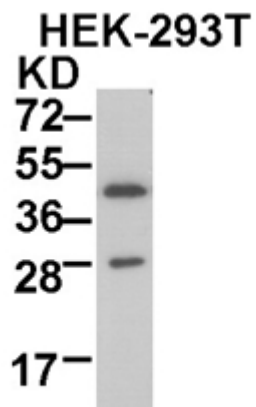
纯化: Purified from serum

成分: PBS (without  $Mg^{2+}$  and  $Ca^{2+}$ ), pH 7.4, 150 mM NaCl, 50% glycerol

种属反应性: Rab25 antibody recognizes Rab25 proteins from vertebrates.

储存条件: Store at  $-20^{\circ}C$ . Avoid repeated freezing and thawing

蛋白质印迹:



**WB: anti-Rab25 pAb**

HEK-293T whole-cell lysate was used for Western blot with anti Rab25 兔多抗 (cat # 21056).