

## RAB17 PAB

产品名称: Rab17 兔多抗

货号: 21049

基因符号: RAB17

描述: Rab17 兔多抗

背景: The Rab-subfamily of small GTPases plays an important role in the regulation of membrane trafficking. Rab17 is an epithelial cell-specific GTPase, which is involved in transcellular transport.

免疫原: A synthetic peptide from the C-terminal end of huamn Rab17 蛋白

经过测试的应用: ELISA, WB, IHC

推荐稀释比:

ELISA: 1:100-1:5000

WB: 1:100-1:2000

IHC: 1:100-1:1000

**Concentration:** 0.2 mg/ml

种属反应性: Rabbit

形式: Liquid

克隆性: Polyclonal

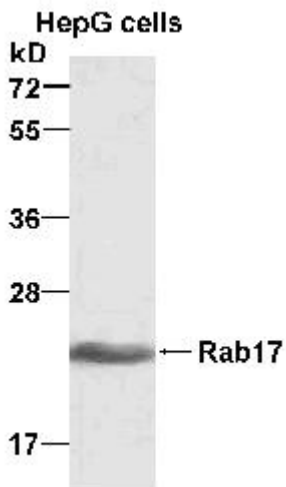
纯化: Purified from serum

成分: PBS (without  $Mg^{2+}$  and  $Ca^{2+}$ ), pH 7.4, 150 mM NaCl, 50% glycerol

种属反应性: Rab17 antibody recognizes Rab17 from vertebrates.

储存条件: Store at  $-20^{\circ}C$ . Avoid repeated freezing and thawing

**蛋白质印迹:**



WB: anti-Rab17 pAb

HepG whole-cell lysate was used for Western blot with anti Rab17 兔多抗 (cat # 21049).