

## RAB11 PAB

产品名称: Rab11 兔多抗

货号: 21157

基因符号: RAB11

描述: Rab11 兔多抗

背景: Small GTPases of the Rab-family are crucial elements of the machinery that controls membrane traffic. Rab11 has been shown to control traffic through the recycling endosome. Immunogen: A synthetic peptide near the N-terminus of of human Rab11.

免疫原: A synthetic peptide near the N-terminus of of human Rab11.

经过测试的应用: ELISA, WB, IHC, IP

推荐稀释比:

ELISA: 1:100-1:5000

WB: 1:100-1:1000

IHC: 1:100-1:1000

**Concentration:** 0.15 mg/ml

种属反应性: Rabbit

形式: Liquid

克隆性: Polyclonal

亚型: IgG

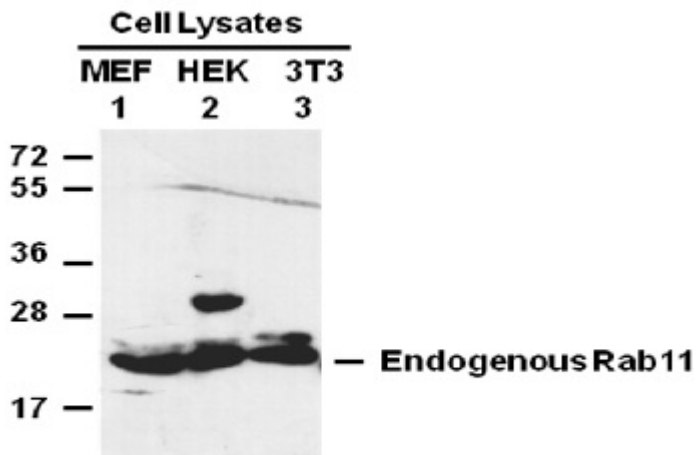
纯化: Purified from serum

成分: PBS (without  $Mg^{2+}$  and  $Ca^{2+}$ ), pH 7.4, 150 mM NaCl, 50% glycerol

种属反应性: Rab11 antibody recognizes Rab11 of vertebrates.

储存条件: Store at  $-20^{\circ}C$ . Avoid repeated freezing and thawing

蛋白质印迹:



WB: anti-Rab11BpAb

### Western blot analysis of Rab11 proteins.

Whole-cell lysates of MEF (lane 1), HEK293T (lane 2) and 3T3 (lane 3) cells were used for western blots with the anti Rab11 兔多抗 (货号: 21157).