

## PD-L1 (DM123) RABBIT MAB

货号: 28468

产品全名: PD-L1(DM123) 兔单克隆抗体

基因符号 PD-L1; CD274; B7-H1; PDCD1L1; PDCD1LG1

描述: PD-L1 antibody(DM123) 兔单克隆抗体

背景: This gene encodes an immune inhibitory receptor ligand that is expressed by hematopoietic and non-hematopoietic cells; such as T cells and B cells and various types of tumor cells. The encoded protein is a type I transmembrane protein that has immunoglobulin V-like and C-like domains. Interaction of this ligand with its receptor inhibits T-cell activation and cytokine production. During infection or inflammation of normal tissue; this interaction is important for preventing autoimmunity by maintaining homeostasis of the immune response. In tumor microenvironments; this interaction provides an immune escape for tumor cells through cytotoxic T-cell inactivation. Expression of this gene in tumor cells is considered to be prognostic in many types of human malignancies; including colon cancer and renal cell carcinoma. Alternative splicing results in multiple transcript variants.

经过测试的应用: ELISA; Flow Cyt

推荐稀释比: ELISA 1:5000-10000; Flow Cyt 1:100

种属反应性: Rabbit

亚型: Rabbit IgG

纯化: Purified from cell culture supernatant by affinity chromatography

种属反应性: 人 PD-L1

成分: Lyophilized from sterile PBS, pH 7.4. 5% - 8% trehalose is added as protectants before lyophilization.

储存和运输: Store at  $-20^{\circ}\text{C}$  to  $-80^{\circ}\text{C}$  for 12 months in lyophilized form. After reconstitution, if not intended for use within a month, aliquot and store at  $-80^{\circ}\text{C}$  (Avoid repeated freezing and thawing).

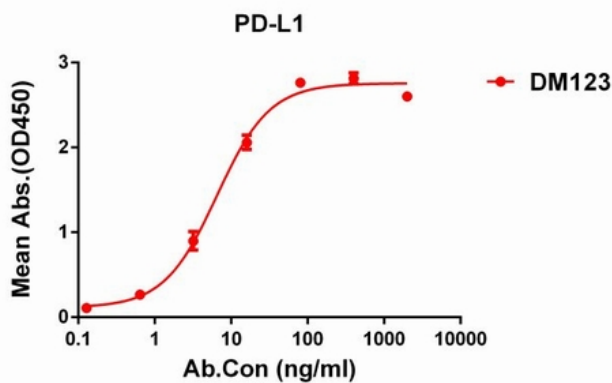


Figure 1. ELISA plate pre-coated by  $1\ \mu\text{g/ml}$  ( $100\ \mu\text{l/well}$ ) Human PD-L1 protein, mFc His tagged protein 11151 can bind Rabbit anti-PD-L1 monoclonal antibody (clone: DM123) in a linear range of 0.1-15 ng/ml.

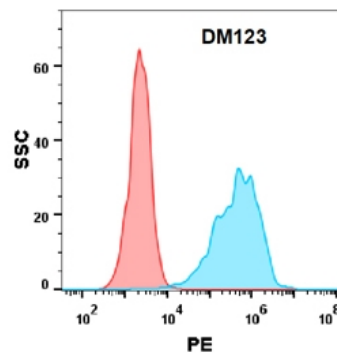


Figure 2. Flow cytometry analysis with Anti-PD-L1 (DM123) on Expi293 cells transfected with human PD-L1 (Blue histogram) or Expi293 transfected with irrelevant protein (Red histogram).