

NFE2L2(D29G)

产品名称: NFE2L2(D29G)

货号: 26331

基因符号: NFE2L2, NRF2

描述: NFE2L2(D29G) 小鼠单抗

背景: NFE2L2 protein is encoded by NFE2L2 gene. It is a basic leucine zipper protein that regulates the expression of antioxidant proteins that protect against oxidative damage triggered by injury and inflammation. Several drugs that stimulate the NFE2L2 pathway are being studied for treatment of diseases that are caused by oxidative stress.

免疫原: A synthetic peptide from the internal region of NFE2L2 which includes the mutation of D29G, human origin.

经过测试的应用: ELISA, WB and IHC

推荐稀释比: ELISA: 1:1000-1:2000WB: 1:500-1:1000IHC: 1:50-1:100

Concentration: 1 mg/ml

种属反应性: Mouse

形式: Liquid

克隆性: Monoclonal

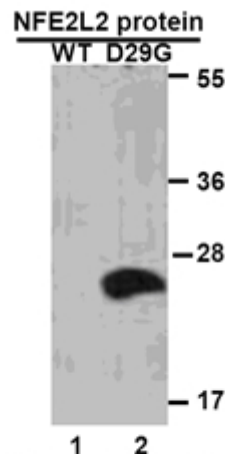
亚型: IgG

纯化: Purified from ascites

成分: PBS (without Mg^{2+} and Ca^{2+}), pH 7.4, 150 mM NaCl, 50% glycerol

种属反应性: Recognizes D29G mutant, but not wild type NFE2L2 of vertebrates.

储存条件: Store at $-20^{\circ}C$. Avoid repeated freezing and thawing



蛋白质印迹: WB: anti-NFE2L2 (D29G) mAb

Western blot analysis of recombinant NFE2L2(D29G) and wild type proteins. Purified His-tagged NFE2L2(D29G) protein (lane2) and corresponding wild type protein (lane1) were blotted with Anti-NFE2L2(D29G) monoclonal antibody (货号:26331).

Immunofluorescence: HEK293T cells expressing NFE2L2 proteins with Anti-NFE2L2(D29G) antibody. HEK293T cells were transfected with pCDNA3-GFP-NFE2L2 (WT) plasmid (left column) or pCDNA3-GFP-NFE2L2(D29G) plasmid (right column), then fixed and stained with Anti-NFE2L2(D29G) monoclonal antibody (货号:26331).

