

NFE2L2(L30F) PROTEIN

产品名称: NFE2L2(L30F) 突变蛋白

货号: 10448

产品全名: NFE2L2 Protein L30F 突变蛋白

基因符号 Nuclear factor (erythroid-derived 2)-like 2, Nrf2

Source: Human, recombinant full length, His6-tag

Expression 种属反应性: E. coli

分子量: 26 kDa

纯化: >99% by SDS-PAGE

Introduction: NFE2L2 protein is encoded by NFE2L2 gene. It is a basic leucine zipper protein that regulates the expression of antioxidant proteins that protect against oxidative damage triggered by injury and inflammation. Several drugs that stimulate the NFE2L2 pathway are being studied for treatment of diseases that are caused by oxidative stress.

Amino Acid Sequence (1-170)

MMDLELPPPGGLPSQQDMDLIDILWRQDIDFGVSREVFD
FSQRRKEYELEKQKKLEKERQEQLQKEQEKAFFAQLQL
DEETGEFLPIQPAQHIIQSETSGSANYSQVAHIPKSDAL
YFDDCMQLLAQTFFVDDNEVSSATFQSLVPDIPGHIE
SPVFIATNQAQSPETSVA

Properties

Physical Appearance (form): Dissolved in 20mM Tris-HCl, pH8.0, 150mM NaCl.

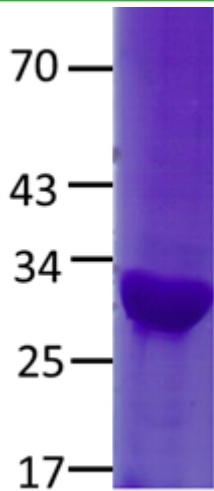
Physical Appearance (form): White or clear

Concentration: 1 mg/mL

Storage: -80°C

Preparation Instructions:

Adding of 10 mM β -mercaptoethanol or 1 mM DTT into the solution to protect the protein is recommended and using of non-ionic detergents such as n-Dodecyl β -D-maltoside (DoDM) or polyethylene detergents (e.g. C12E10) also help to stabilize the protein. Avoid repeated freezing and thawing.



The purity of His-tagged NFE2L2 L30F was determined by SDS-PAGE and Coomassie Brilliant Blue Staining.

References:

1. Moi P et al., Proc. Natl. Acad. Sci. U.S.A. 91 (21): 9926-30.
2. Gold R et al., N. Engl. J. Med. 367 (12): 1098-107.