

## MESOTHELIN VHH-HUMAN IGG1 FC MAB

货号: 28156

产品全名: Mesothelin VHH-Human IgG1 Fc

基因符号 MSLN;MPF

描述: Mesothelin VHH-human IgG1 Fc

背景: Research grade biosimilar. Not for use in therapeutic or diagnostic procedures for humans or animals.

经过测试的应用: ELISA; Flow Cyt

推荐稀释比: ELISA 1:5000-10000; Flow Cyt 1:100

种属反应性: Humanized

亚型: IgG1

纯化: Purified from cell culture supernatant by affinity chromatography

种属反应性: 人 Mesothelin

成分: Lyophilized from sterile PBS, pH 7.4. 5% - 8% trehalose is added as protectants before lyophilization.

储存和运输: Store at -20°C to -80°C for 12 months in lyophilized form. After reconstitution, if not intended for use within a month, aliquot and store at -80°C (Avoid repeated freezing and thawing).

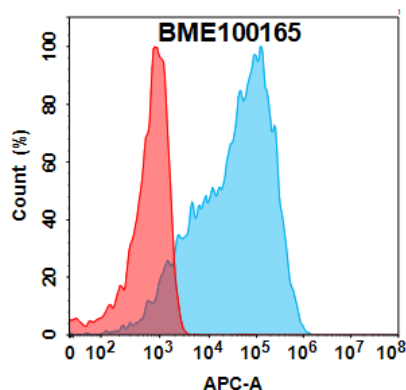


Figure 1. Flow cytometry analysis with 1 $\mu$ g/mL Anti-Mesothelin VHH-human IgG1 Fc (28156) on Expi293 cells transfected with Human Mesothelin protein (Blue histogram) or Expi293 transfected with irrelevant protein (Red histogram).

**Anti-Mesothelin VHH-human IgG1 Fc ELISA**  
0.2  $\mu$ g of Human Mesothelin (296-580), mFc-His tagged protein per well

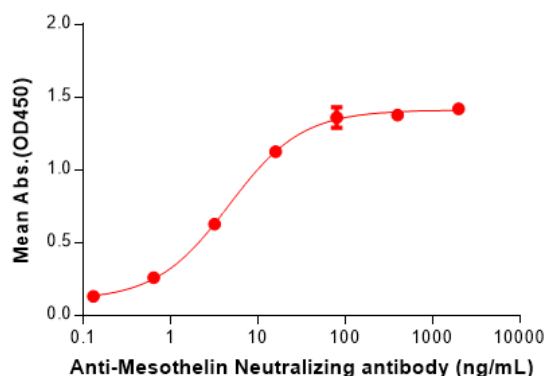


Figure 2. ELISA plate pre-coated by 2  $\mu$ g/mL (100  $\mu$ l/well) Human Mesothelin (296-580) Protein, mFc-His Tag (11159) can bind Anti-Mesothelin VHH-human IgG1 Fc (28156) in a linear range of 0.64-16 ng/mL.