

## GUCY2C MAB (INDUSATUMAB)

货号: 28073

产品全名: GUCY2C(Indusatumab) 单抗

基因符号 DIAR6;GC-C;GUC2C;MEC1L;MUCIL;STAR

描述: GUCY2C(indusatumab) 单抗

背景: Research grade biosimilar. Not for use in therapeutic or diagnostic procedures for humans or animals.

经过测试的应用: ELISA; Flow Cyt

推荐稀释比: ELISA 1:5000-10000; Flow Cyt 1:100

种属反应性: Homo sapiens

亚型: IgG1

纯化: Purified from cell culture supernatant by affinity chromatography

种属反应性: 人 GUCY2C

成分: Lyophilized from sterile PBS, pH 7.4. 5% - 8% trehalose is added as protectants before lyophilization.

储存和运输: Store at  $-20^{\circ}\text{C}$  to  $-80^{\circ}\text{C}$  for 12 months in lyophilized form. After reconstitution, if not intended for use within a month, aliquot and store at  $-80^{\circ}\text{C}$  (Avoid repeated freezing and thawing).

**Anti-GUCY2C (indusatumab biosimilar) mAb ELISA**  
0.1  $\mu\text{g}$  of Human GUCY2C, His tagged protein per well

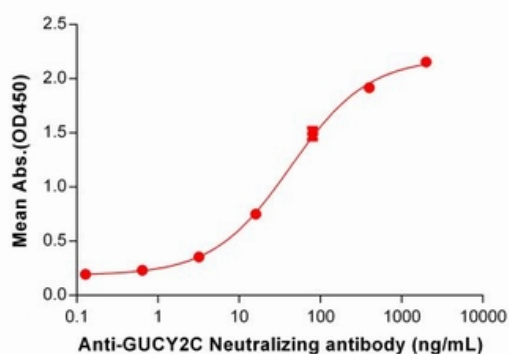


Figure 1. ELISA plate pre-coated by  $1\ \mu\text{g}/\text{mL}$  ( $100\ \mu\text{l}/\text{well}$ ) Human GUCY2C protein, His Tag 11252 can bind Anti-GUCY2C Neutralizing antibody (28073) in a linear range of 3.2-400 ng/mL.

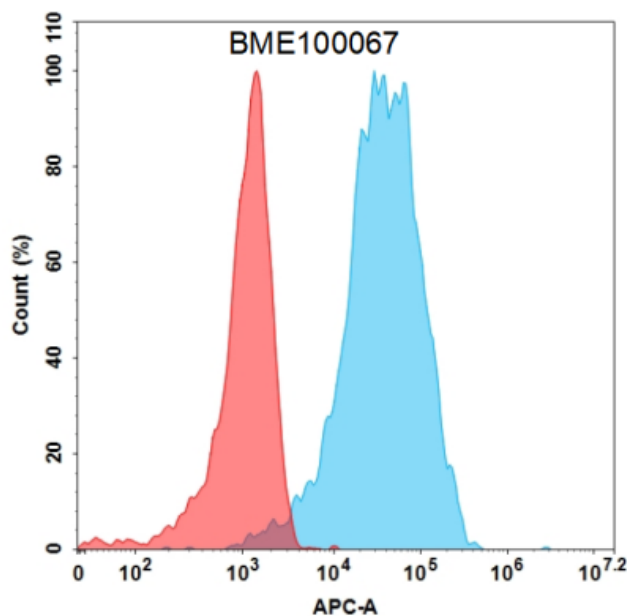


Figure 2. Flow cytometry analysis with Anti-GUCY2C(indusatumab biosimilar) mAb  $1\ \mu\text{g}/\text{mL}$  on Expi293 cells transfected with Human GUCY2C (Blue histogram) or Expi293 transfected with irrelevant protein (Red histogram).