

HUMAN PRLR PROTEIN, HFC TAG

货号: 11538

产品全名: 人 PRLR 蛋白

规格: 10/50/100 µg

基因符号 Prolactin receptor;PRL-R

目标蛋白: PRLR

UNIPROT ID: P16471

描述: Recombinant human PRLR protein with C-terminal human Fc tag

背景: This gene encodes a receptor for the anterior pituitary hormone, prolactin, and belongs to the type I cytokine receptor family. Prolactin-dependent signaling occurs as the result of ligand-induced dimerization of the prolactin receptor. Several alternatively spliced transcript variants encoding different membrane-bound and soluble isoforms have been described for this gene, which may function to modulate the endocrine and autocrine effects of prolactin in normal tissue and cancer. [provided by RefSeq, Feb 2011]

物种/宿主: HEK293

分子量: The protein has a predicted molecular mass of 50.5 kDa after removal of the signal peptide. The apparent molecular mass of PRLR-hFc is approximately 55-70 kDa due to glycosylation.

分子特征: PRLR(Gln25-Asp234) hFc(Glu99-Ala330)

纯化: The purity of the protein is greater than 95% as determined by SDS-PAGE and Coomassie blue staining.

Formulation & Reconstitution: Lyophilized from nanodisc solubilization buffer (20 mM Tris-HCl, 150 mM NaCl, pH 8.0). Normally 5% - 8% trehalose is added as protectants before lyophilization.

储存和运输: Store at -20°C to -80°C for 12 months in lyophilized form. After reconstitution, if not intended for use within a month, aliquot and store at -80°C (Avoid repeated freezing and thawing). Lyophilized proteins are shipped at ambient temperature.

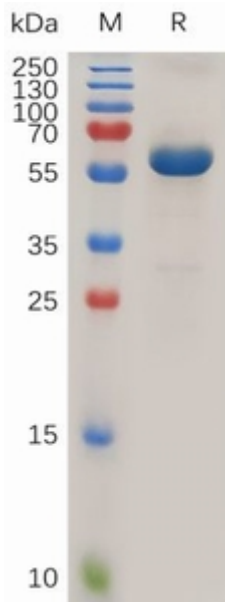


Figure 1. Human PRLR Protein, hFc Tag on SDS-PAGE under reducing condition.