

HUMAN GP6 PROTEIN, HFC TAG

货号: 11432

产品全名: 人 GP6 蛋白

规格: 10/50/100 µg

基因符号 BDPLT11;GPIV;GPVI

目标蛋白: GP6

UNIPROT ID: Q9HCN6

描述: Recombinant Human GP6 with C-terminal human Fc tag

背景: This gene encodes a platelet membrane glycoprotein of the immunoglobulin superfamily. The encoded protein is a receptor for collagen and plays a critical role in collagen-induced platelet aggregation and thrombus formation. The encoded protein forms a complex with the Fc receptor gamma-chain that initiates the platelet activation signaling cascade upon collagen binding. Mutations in this gene are a cause of platelet-type bleeding disorder-11 (BDPLT11). Alternatively spliced transcript variants encoding multiple isoforms have been observed for this gene. [provided by RefSeq, Dec 2011]

物种/宿主: HEK293

分子量: The protein has a predicted molecular mass of 53.1 kDa after removal of the signal peptide. The apparent molecular mass of GP6-hFc is approximately 55-100 kDa due to glycosylation.

分子特征: GP6(Gln21-Lys267) hFc(Glu99-Ala330)

纯化: The purity of the protein is greater than 95% as determined by SDS-PAGE and Coomassie blue staining.

Formulation & Reconstitution: Lyophilized from nanodisc solubilization buffer (20 mM Tris-HCl, 150 mM NaCl, pH 8.0). Normally 5% – 8% trehalose is added as protectants before lyophilization.

储存和运输: Store at -20°C to -80°C for 12 months in lyophilized form. After reconstitution, if not intended for use within a month, aliquot and store at -80°C (Avoid repeated freezing and thawing). Lyophilized proteins are shipped at ambient temperature.

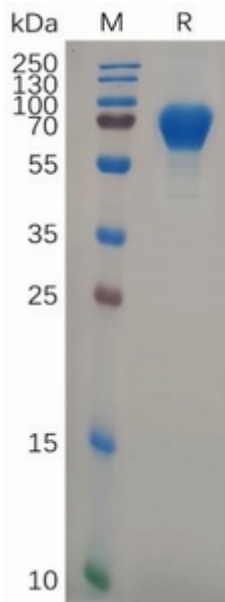


Figure 1. Human GP6 Protein, hFc Tag on SDS-PAGE under reducing condition.