

## HUMAN FLT1 PROTEIN, HIS TAG

货号: 11516

产品全名: 人 FLT1 蛋白

规格: 10/50/100 µg

基因符号 VEGFR-1;Tyrosine-protein kinase FRT;FLT-1;FLT;Vascular permeability factor receptor

目标蛋白: FLT1

**UNIPROT ID:** P17948

**描述:** Recombinant human FLT1 protein with C-terminal 6xHis tag

**背景:** This gene encodes a member of the vascular endothelial growth factor receptor (VEGFR) family. VEGFR family members are receptor tyrosine kinases (RTKs) which contain an extracellular ligand-binding region with seven immunoglobulin (Ig)-like domains, a transmembrane segment, and a tyrosine kinase (TK) domain within the cytoplasmic domain. This protein binds to VEGFR-A, VEGFR-B and placental growth factor and plays an important role in angiogenesis and vasculogenesis. Expression of this receptor is found in vascular endothelial cells, placental trophoblast cells and peripheral blood monocytes. Multiple transcript variants encoding different isoforms have been found for this gene. Isoforms include a full-length transmembrane receptor isoform and shortened, soluble isoforms. The soluble isoforms are associated with the onset of pre-eclampsia.[provided by RefSeq, May 2009]

**物种/宿主:** HEK293

**分子量:** The protein has a predicted molecular mass of 83.0 kDa after removal of the signal peptide. The apparent molecular mass of FLT1-His is approximately 100-130 kDa due to glycosylation.

**分子特征:** FLT1(Ser27-Asn756) 6xHis tag

**纯化:** The purity of the protein is greater than 85% as determined by SDS-PAGE and Coomassie blue staining.

**Formulation & Reconstitution:** Lyophilized from nanodisc solubilization buffer (20 mM Tris-HCl, 150 mM NaCl, pH 8.0). Normally 5% - 8% trehalose is added as protectants before lyophilization.

**储存和运输:** Store at -20°C to -80°C for 12 months in lyophilized form. After reconstitution, if not intended for use within a month, aliquot and store at -80°C (Avoid repeated freezing and thawing). Lyophilized proteins are shipped at ambient temperature.

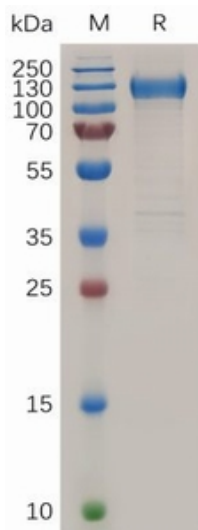


Figure 1. Human FLT1 Protein, His Tag on SDS-PAGE under reducing condition.

## Human FLT1, His Tagged protein ELISA

0.2  $\mu$ g of Human FLT1, His tagged protein per well

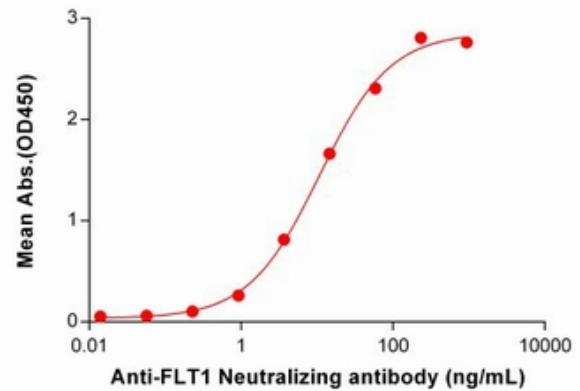


Figure 2. ELISA plate pre-coated by 2  $\mu$ g/ml (100  $\mu$ l/well) Human FLT1 Protein, His Tag (11516) can bind Anti-FLT1 Neutralizing antibody 28126 in a linear range of 0.92-234.38 ng/mL.