

HUMAN FGL1 PROTEIN, HIS TAG

货号: 11823

产品全名: 人 FGL1 蛋白

规格: 10/50/100 µg

基因符号 HFREPI;HP-041;HPS;LFIRE-1;LFIRE1

目标蛋白: FGL1

UNIPROT ID: Q08830

描述: Recombinant Human FGL1 protein with C-terminal 6xHis tag

背景: Fibrinogen-like 1 is a member of the fibrinogen family. This protein is homologous to the carboxy terminus of the fibrinogen beta- and gamma- subunits which contains the four conserved cysteines of fibrinogens and fibrinogen related proteins. However, this protein lacks the platelet-binding site, cross-linking region and a thrombin-sensitive site which are necessary for fibrin clot formation. This protein may play a role in the development of hepatocellular carcinomas. Four alternatively spliced transcript variants encoding the same protein exist for this gene. [provided by RefSeq, Jul 2008]

物种/宿主: HEK293

分子量: The protein has a predicted molecular mass of 34.8 kDa after removal of the signal peptide. The apparent molecular mass of FGL1-His is approximately 25-35 kDa due to glycosylation.

分子特征: FGL1(Leu23-Ile312) 6×His tag

纯化: The purity of the protein is greater than 85% as determined by SDS-PAGE and Coomassie blue staining.

Formulation & Reconstitution: Lyophilized from nanodisc solubilization buffer (20 mM Tris-HCl, 150 mM NaCl, pH 8.0). Normally 5% – 8% trehalose is added as protectants before lyophilization.

储存和运输: Store at -20°C to -80°C for 12 months in lyophilized form. After reconstitution, if not intended for use within a month, aliquot and store at -80°C (Avoid repeated freezing and thawing). Lyophilized proteins are shipped at ambient temperature.

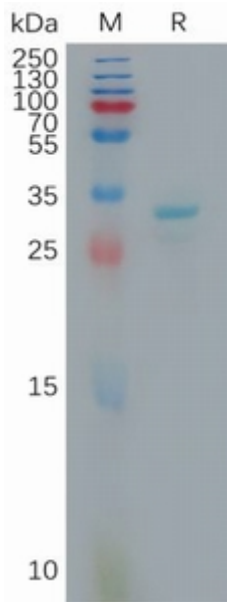


Figure 1. Human FGL1 Protein, His Tag on SDS-PAGE under reducing condition.