

HUMAN EPCAM PROTEIN, HIS TAG

货号: 11191

产品全名: 人 EPCAM 蛋白

规格: 10/50/100 μ g

基因符

号 EPCAM;ACSTD1;ROPI;D326;IAR5;GP2;GP314;GP40;SA;A733-2;NPCC8;NPCC-8;SI/4;SA;4SI;IC18;KI

目标蛋白: EPCAM

UNIPROT ID: P16422

描述: Recombinant human EPCAM protein with C-terminal 6xHis tag

背景: This gene encodes a carcinoma-associated antigen and is a member of a family that includes at least two type I membrane proteins. This antigen is expressed on most normal epithelial cells and gastrointestinal carcinomas and functions as a homotypic calcium-independent cell adhesion molecule. The antigen is being used as a target for immunotherapy treatment of human carcinomas. Mutations in this gene result in congenital tufting enteropathy.

物种/宿主: HEK293

分子量: The protein has a predicted molecular mass of 28.2 kDa after removal of the signal peptide.

分子特征: EPCAM(Gln24-Lys265) 6xHis tag

纯化: The purity of the protein is greater than 95% as determined by SDS-PAGE and Coomassie blue staining.

Formulation & Reconstitution: Lyophilized from nanodisc solubilization buffer (20 mM Tris-HCl, 150 mM NaCl, pH 8.0). Normally 5% – 8% trehalose is added as protectants before lyophilization.

储存和运输: Store at -20°C to -80°C for 12 months in lyophilized form. After reconstitution, if not intended for use within a month, aliquot and store at -80°C (Avoid repeated freezing and thawing). Lyophilized proteins are shipped at ambient temperature.

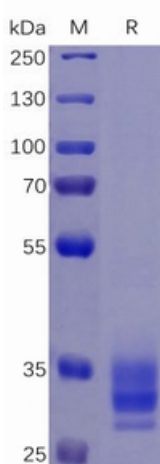


Figure 1. Human EPCAM Protein, His Tag on SDS-PAGE under reducing condition.

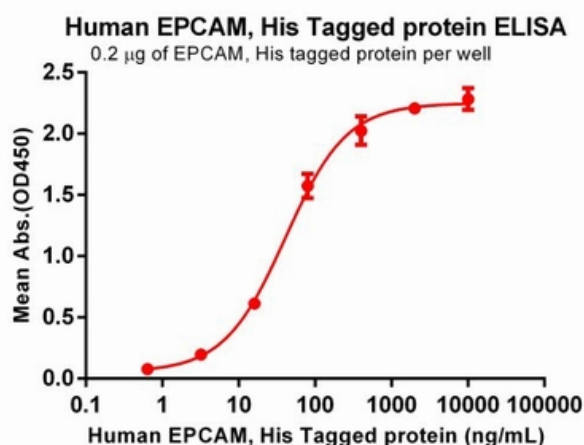


Figure 2. ELISA plate pre-coated by 2 μ g/ml (100 μ l/well) Human EPCAM Protein, His Tag (11191) can bind Anti-EPCAM antibody(DM147), Rabbit mAb in a linear range of 3.20-16 ng/mL.



Product Description

Pioneering GTPase and Oncogene Product Development since 2010
