

## HUMAN CRLF2 PROTEIN, HIS TAG

货号: 11245

产品全名: 人 CRLF2 蛋白

规格: 10/50/100 µg

基因符号 CRL2;TSLPR;CRLF2Y

目标蛋白: CRLF2

**UNIPROT ID:** Q9HC73

**描述:** Recombinant Human CRLF2 Protein with C-terminal 6XHis tag

**背景:** This gene encodes a member of the type I cytokine receptor family. The encoded protein is a receptor for thymic stromal lymphopoietin (TSLP). Together with the interleukin 7 receptor (IL7R), the encoded protein and TSLP activate STAT3, STAT5, and JAK2 pathways, which control processes such as cell proliferation and development of the hematopoietic system. Rearrangement of this gene with immunoglobulin heavy chain gene (IGH) on chromosome 14, or with P2Y purinoceptor 8 gene (P2RY8) on the same X or Y chromosomes is associated with B-progenitor acute lymphoblastic leukemia (ALL) and Down syndrome ALL. Alternatively spliced transcript variants have been found for this gene. [provided by RefSeq, Sep 2014]

**物种/宿主:** HEK293

**分子量:** The protein has a predicted molecular mass of 25.0 kDa after removal of the signal peptide. The apparent molecular mass of CRLF2-His is approximately 25-55 kDa due to glycosylation.

**分子特征:** CRLF2(Gln23-Lys231) 6×His tag

**纯化:** The purity of the protein is greater than 85% as determined by SDS-PAGE and Coomassie blue staining.

**Formulation & Reconstitution:** Lyophilized from nanodisc solubilization buffer (20 mM Tris-HCl, 150 mM NaCl, pH 8.0). Normally 5% – 8% trehalose is added as protectants before lyophilization.

**储存和运输:** Store at -20°C to -80°C for 12 months in lyophilized form. After reconstitution, if not intended for use within a month, aliquot and store at -80°C (Avoid repeated freezing and thawing). Lyophilized proteins are shipped at ambient temperature.

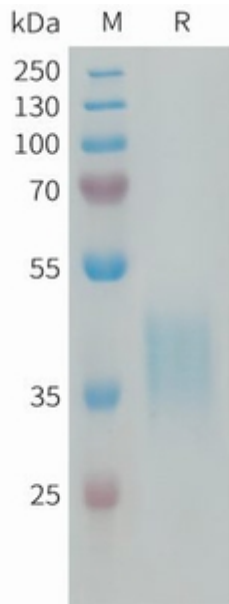


Figure 1. Human CRLF2 Protein, His Tag on SDS-PAGE under reducing condition.