

## HUMAN CLEC2D PROTEIN, HIS TAG

货号: 11529

产品全名: 人 CLEC2D 蛋白

规格: 10/50/100 µg

基因符号 C-type lectin domain family 2 member D;ectin-like NK cell receptor;LT-1;steoclast inhibitory lectin

目标蛋白: CLEC2D

**UNIPROT ID:** Q9UHP7

**描述:** Recombinant human CLEC2D protein with C-terminal 6xHis tag

**背景:** This gene encodes a member of the natural killer cell receptor C-type lectin family. The encoded protein inhibits osteoclast formation and contains a transmembrane domain near the N-terminus as well as the C-type lectin-like extracellular domain. Several alternatively spliced transcript variants have been identified for this gene. [provided by RefSeq, Oct 2010]

**物种/宿主:** HEK293

**分子量:** The protein has a predicted molecular mass of 16.2 kDa after removal of the signal peptide. The apparent molecular mass of CLEC2D-His is approximately 15-25 kDa due to glycosylation.

**分子特征:** CLEC2D(Arg60-Val191) 6xHis tag

**纯化:** The purity of the protein is greater than 85% as determined by SDS-PAGE and Coomassie blue staining.

**Formulation & Reconstitution:** Lyophilized from nanodisc solubilization buffer (20 mM Tris-HCl, 150 mM NaCl, pH 8.0). Normally 5% – 8% trehalose is added as protectants before lyophilization.

**储存和运输:** Store at -20°C to -80°C for 12 months in lyophilized form. After reconstitution, if not intended for use within a month, aliquot and store at -80°C (Avoid repeated freezing and thawing). Lyophilized proteins are shipped at ambient temperature.

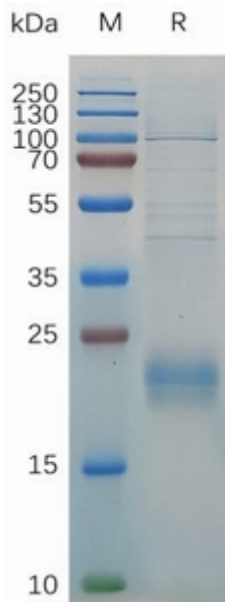


Figure 1. Human CLEC2D Protein, His Tag on SDS-PAGE under reducing condition.