

## HUMAN CLEC1B PROTEIN, HIS TAG

货号: 11863

产品全名: 人 CLEC1B 蛋白

规格: 10/50/100 µg

基因符号 CLEC2;CLEC2B;PRO1384;QDED721

目标蛋白: CLEC1B

**UNIPROT ID:** Q9P126

**描述:** Recombinant Human CLEC1B Protein with N-terminal 6xHis tag

**背景:** Natural killer (NK) cells express multiple calcium-dependent (C-type) lectin-like receptors, such as CD94 (KLRD1; MIM 602894) and NKG2D (KLRC4; MIM 602893), that interact with major histocompatibility complex class I molecules and either inhibit or activate cytotoxicity and cytokine secretion. CLEC2 is a C-type lectin-like receptor expressed in myeloid cells and NK cells (Colonna et al., 2000 [PubMed 10671229]). [supplied by OMIM, Jan 2011]

**物种/宿主:** HEK293

**分子量:** The protein has a predicted molecular mass of 21.5 kDa after removal of the signal peptide. The apparent molecular mass of His-CLEC1B is approximately 25–35 kDa due to glycosylation.

**分子特征:** 6×His tag CLEC1B(Ser55–Pro229)

**纯化:** The purity of the protein is greater than 85% as determined by SDS-PAGE and Coomassie blue staining.

**Formulation & Reconstitution:** Lyophilized from nanodisc solubilization buffer (20 mM Tris-HCl, 150 mM NaCl, pH 8.0). Normally 5% – 8% trehalose is added as protectants before lyophilization.

**储存和运输:** Store at -20°C to -80°C for 12 months in lyophilized form. After reconstitution, if not intended for use within a month, aliquot and store at -80°C (Avoid repeated freezing and thawing). Lyophilized proteins are shipped at ambient temperature.

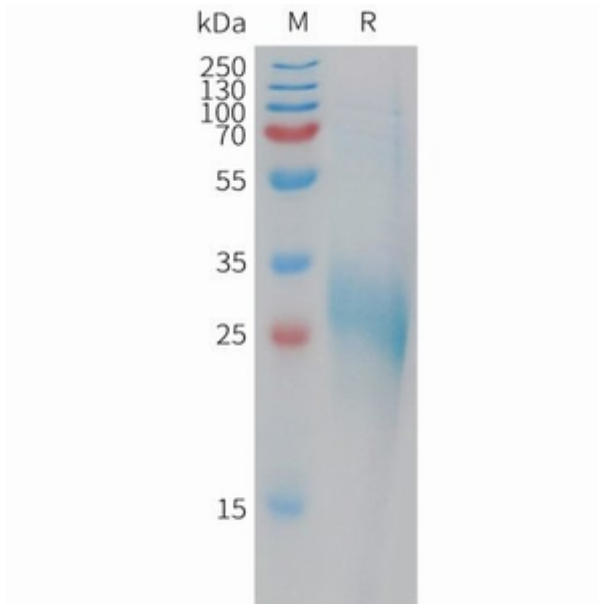


Figure 1. Human CLEC1B Protein, His Tag on SDS-PAGE under reducing condition.