

HUMAN CDH3 PROTEIN, HIS TAG

货号: 11588

产品全名: 人 CDH3 蛋白

规格: 10/50/100 µg

基因符号 CDHP;HJMD;PCAD

目标蛋白: CDH3

UNIPROT ID: P22223

描述: Recombinant human CDH3 protein with C-terminal 6xHis tag

背景: This gene encodes a classical cadherin of the cadherin superfamily. Alternative splicing results in multiple transcript variants, at least one of which encodes a preproprotein that is proteolytically processed to generate the mature glycoprotein. This calcium-dependent cell-cell adhesion protein is comprised of five extracellular cadherin repeats, a transmembrane region and a highly conserved cytoplasmic tail. This gene is located in a gene cluster in a region on the long arm of chromosome 16 that is involved in loss of heterozygosity events in breast and prostate cancer. In addition, aberrant expression of this protein is observed in cervical adenocarcinomas. Mutations in this gene are associated with hypotrichosis with juvenile macular dystrophy and ectodermal dysplasia, ectrodactyly, and macular dystrophy syndrome (EEMS). [provided by RefSeq, Nov 2015]

物种/宿主: HEK293

分子量: The protein has a predicted molecular mass of 60.9 kDa after removal of the signal peptide. The apparent molecular mass of CDH3-His is approximately 70-100 kDa due to glycosylation.

分子特征: CDH3(Ser18-Gly654) 6×His tag

纯化: The purity of the protein is greater than 95% as determined by SDS-PAGE and Coomassie blue staining.

Formulation & Reconstitution: Lyophilized from nanodisc solubilization buffer (20 mM Tris-HCl, 150 mM NaCl, pH 8.0). Normally 5% – 8% trehalose is added as protectants before lyophilization.

储存和运输: Store at -20°C to -80°C for 12 months in lyophilized form. After reconstitution, if not intended for use within a month, aliquot and store at -80°C (Avoid repeated freezing and thawing). Lyophilized proteins are shipped at ambient temperature.

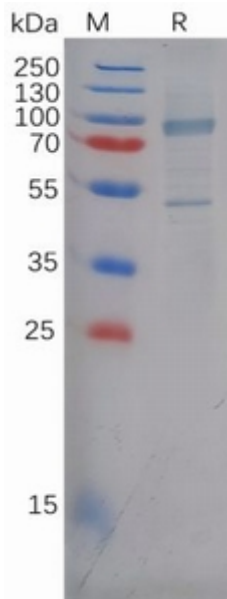


Figure 1. Human CDH3 Protein, His Tag on SDS-PAGE under reducing condition.