

HUMAN CCL28 PROTEIN

货号: 12103

产品全名: 人 CCL28 蛋白

规格: 10/50/100 µg

基因符号 C-C Motif Chemokine 28;Mucosae-Associated Epithelial Chemokine;MEC;Protein CCK1;Small-Inducible Cytokine A28;CCL28;SCYA28

目标蛋白: CCL28

UNIPROT ID: Q9NRJ3

描述: Recombinant Human C-C Motif Chemokine 28 is produced by our E.coli expression system and the target gene encoding Ser20-Tyr127 is expressed.

背景: Chemokine (C-C Motif) Ligand 28 (CCL28) is a novel chemokine that shares the most homology with CCL27/CTACK. CCL28 shows chemotactic activity for resting CD4, CD8 T-cells and eosinophils. It binds to CCR3 and CCR10 and induces calcium mobilization in a dose-dependent manner. CCR10 (GPR2 orphan receptor) is also the receptor for CCL27/CTACK. CCL28 is preferentially expressed by epithelial cells of diverse tissues, with highest expression level in normal and pathological colon. It is also expressed in normal and asthmatic lung tissues. Human and mouse CCL28 shares 83% sequence identity in their mature regions.

物种/宿主: E.coli

分子量: 12.49 KDa

分子特征: Not available

纯化: Greater than 95% as determined by reducing SDS-PAGE.

Formulation & Reconstitution: Lyophilized from nanodisc solubilization buffer (20 mM Tris-HCl, 150 mM NaCl, pH 8.0). Normally 5% – 8% trehalose is added as protectants before lyophilization.

储存和运输: Store at -20°C to -80°C for 12 months in lyophilized form. After reconstitution, if not intended for use within a month, aliquot and store at -80°C (Avoid repeated freezing and thawing). Lyophilized proteins are shipped at ambient temperature.

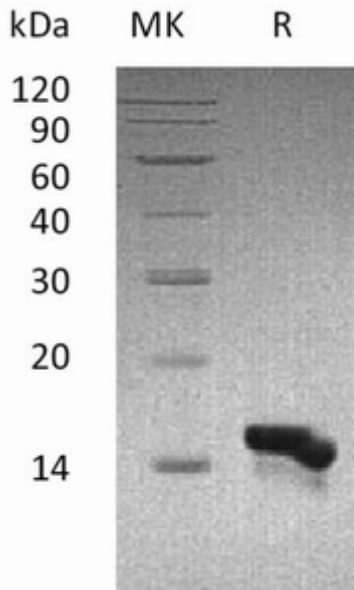


Figure 1. Greater than 95% as determined by reducing SDS-PAGE.