

HUMAN CB1 PROTEIN, HFC TAG

货号: 11311

产品全名: 人 CB1 蛋白

规格: 10/50/100 µg

基因符号 CANN6;CB-R;CB1;CB1A;CB1K5;CB1R;CNR

目标蛋白: CB1

UNIPROT ID: P21554

描述: Recombinant Human CB1 protein with C-terminal human Fc

背景: This gene encodes one of two cannabinoid receptors. The cannabinoids, principally delta-9-tetrahydrocannabinol and synthetic analogs, are psychoactive ingredients of marijuana. The cannabinoid receptors are members of the guanine-nucleotide-binding protein (G-protein) coupled receptor family, which inhibit adenylate cyclase activity in a dose-dependent, stereoselective and pertussis toxin-sensitive manner. The two receptors have been found to be involved in the cannabinoid-induced CNS effects (including alterations in mood and cognition) experienced by users of marijuana. Multiple transcript variants encoding two different protein isoforms have been described for this gene.

物种/宿主: HEK293

分子量: The protein has a predicted molecular mass of 44.2 kDa after removal of the signal peptide. The apparent molecular mass of CB1-hFc is approximately 70-100 kDa due to glycosylation.

分子特征: CB1(Met1-Gln116) (Asp176-Asn187) (Asn256-Glu273) (Asp366-Thr377)
hFc(Glu99-Ala330)

纯化: The purity of the protein is greater than 95% as determined by SDS-PAGE and Coomassie blue staining.

Formulation & Reconstitution: Lyophilized from nanodisc solubilization buffer (20 mM Tris-HCl, 150 mM NaCl, pH 8.0). Normally 5% - 8% trehalose is added as protectants before lyophilization.

储存和运输: Store at -20°C to -80°C for 12 months in lyophilized form. After reconstitution, if not intended for use within a month, aliquot and store at -80°C (Avoid repeated freezing and thawing). Lyophilized proteins are shipped at ambient temperature.

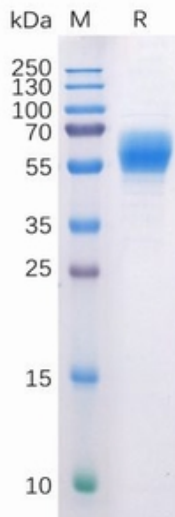


Figure 1. Human CB1 Protein, hFc Tag on SDS-PAGE under reducing condition.

Human CB1 Protein, hFc Tagged protein ELISA
0.2 μ g of Human CB1, hFc tagged protein per well

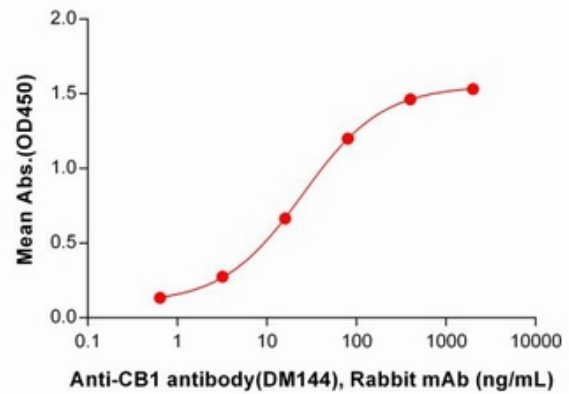


Figure 2. ELISA plate pre-coated by 2 μ g/ml (100 μ l/well) Human CB1 Protein, hFc Tag (11311) can bind Anti-CB1 antibody(DM144), Rabbit mAb in a linear range of 3.20-16 ng/mL.