

**FASCIN-INTERNAL MAB**

产品名称: Fascin(internal)

货号: 26013

基因符号: FSCN1

描述: Fascin(internal) 小鼠单抗

背景: Fascin is an ~58 kDa monomeric actin filament bundling protein. It is required to maximally cross-link the actin filaments into straight, compact, and rigid bundles, and contributes to the formation of filopodia that are critical for cell migration. Elevated levels of fascin have been found in metastatic tumors and are correlated with clinically aggressive phenotypes, poor prognosis, and shorter survival.

免疫原: A peptide from the middle of human Fascin 1

经过测试的应用: ELISA, WB, IP, IHC

推荐稀释比:

ELISA: 1:1000-1:5000

WB: 1:100-1:2000

IP: 1  $\mu$  for 1~2 mg total cellular proteins

IHC: 1:100 dilution

**Concentration:** 1 mg/ml

种属反应性: Mouse

形式: Liquid

克隆性: Monoclonal

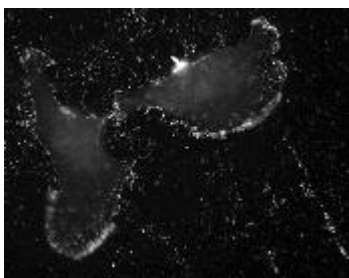
亚型: IgG

纯化: Purified from ascites

成分: PBS (without  $Mg^{2+}$  and  $Ca^{2+}$ ), pH 7.4, 150 mM NaCl, 50% glycerol

种属反应性: fascin antibody recognizes fascin 1, 2 and 3 of vertebrates.

储存条件: Store at  $-20^{\circ}C$ . Avoid repeated freezing and thawing

**Immunofluorescence:**

Detection of fascin by immunofluorescence in 4T1 mouse breast tumor cells with antifascin monoclonal antibody (Cat # 26013).

