

FASCIN-NTERMINAL MAB

产品名称: Fascin 小鼠单抗

货号: 26012

基因符号: FSCN1

描述: Fascin 小鼠单抗

背景: Fascin is an ~58 kDa monomeric actin filament bundling protein. It is required to maximally cross-link the actin filaments into straight, compact, and rigid bundles, and contributes to the formation of filopodia that are critical for cell migration. Elevated levels of fascin have been found in metastatic tumors and are correlated with clinically aggressive phenotypes, poor prognosis, and shorter survival.

免疫原: A peptide from the N-terminal of human Fascin 1

经过测试的应用: ELISA, WB, IP, IHC

推荐稀释比:

ELISA: 1:1000-1:5000

WB: 1:100-1:2000

IP: 1 μ for 1~2 mg total cellular proteins

IHC: 1:100 dilution

Concentration: 1 mg/ml

种属反应性: Mouse

形式: Liquid

克隆性: Monoclonal

亚型: IgG

纯化: Purified from ascites

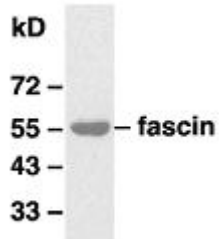
成分: PBS (without Mg^{2+} and Ca^{2+}), pH 7.4, 150 mM NaCl, 50% glycerol

种属反应性: fascin antibody recognizes fascin 1, 2 and 3 of vertebrates.

储存条件: Store at $-20^{\circ}C$. Avoid repeated freezing and thawing

蛋白质印迹:

4T1 cells



WB: anti-fascin mAb

Western blot analysis of fascin proteins.

Whole-cell lysate of 4T1 mouse breast tumor cells was used for western blots with the monoclonal anti fascin antibody (Cat # 26012).