

## EML4 ALK

产品名称: EML4 ALK 小鼠单抗

货号: 26242

基因符号: EML4-ALK

描述: EML4 ALK 小鼠单抗

背景: EML4-ALK is a fusion-type protein kinase that can be found in many tumors, such as anaplastic large cell lymphoma, inflammatory myofibroblastic tumor, neuroblastoma and NSCLC, and so on. It is generated as a result of a small inversion within the short arm of human chromosome 2. EML4-ALK protein often promotes and maintains the malignant behavior of the cancer cells by activating the MAPK, PI3K/AKT and JAK/STAT3 pathways.

免疫原: A synthetic peptide from the internal region of EML4-ALK of human origin.

经过测试的应用: ELISA, WB, IHC

推荐稀释比: ELISA: 1:1000-1:2000WB: 1:500-1:1000IHC: 1:50-1:100

**Concentration:** 1 mg/ml

种属反应性: Mouse

形式: Liquid

克隆性: Monoclonal

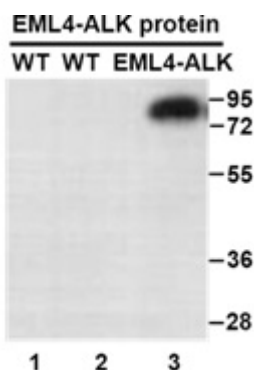
亚型:

纯化: Purified from ascites

成分: PBS (without  $Mg^{2+}$  and  $Ca^{2+}$ ), pH 7.4, 150 mM NaCl, 50% glycerol

种属反应性: Recognizes T41A mutant, but not wild type EML4-ALK of vertebrates.

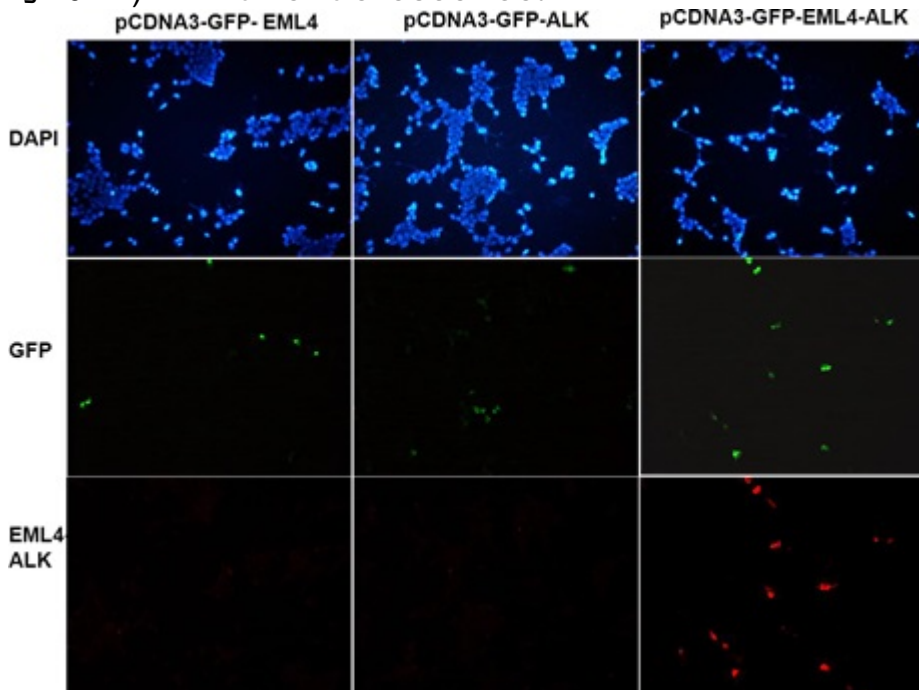
储存条件: Store at  $-20^{\circ}C$ . Avoid repeated freezing and thawing



蛋白质印迹: WB: Anti- EML4-ALK mAb Western blot analysis of recombinant EML4-ALK and wild type proteins. Purified His-tagged EML4-ALK protein (lane 3).

FOR RESEARCH USE ONLY. NOT FOR DIAGNOSTIC APPLICATIONS

corresponding wild type EML4 protein (lane1) and wild type ALK protein (lane2) were blotted with Anti-EML4 ALK monoclonal antibody (货号:26242). **Immunofluorescence:**



Immunofluorescence of cells expressing EML4-ALK proteins with Anti-EML4 ALK antibody. HEK293T cells were transfected with pCDNA3-GFP-EML4 (WT) plasmid (left column) or pCDNA3-GFP-ALK (WT) plasmid (middle column) or pCDNA3-GFP-EML4-ALK plasmid (right column), then fixed and stained with Anti-EML4 ALK monoclonal antibody (货号:26242).