

EGFR(L858R)

产品名称: EGFR(L858R) 小鼠单抗

货号: 26082

基因符号: EGFR/HER1/ERBB1

描述: EGFR(L858R) 小鼠单抗

背景: EGFR is a receptor tyrosine kinase binding ligands of the EGF family and activating several signaling cascades to convert extracellular cues into appropriate cellular responses. It activates at least 4 major downstream signaling cascades including the RAS-RAF-MEK-ERK, PI3 kinase-AKT, PLC gamma-PKC and STATs modules. Defects in EGFR are associated with lung cancer (LNCR).

免疫原: A synthetic peptide from the internal region of EGFR which includes the mutation of L858R, human origin.

经过测试的应用: ELISA, WB, IF, IHC

推荐稀释比: ELISA: 1:1000-1:5000WB: 1:1000-1:5000IHC: 1:50-1:100

Concentration: 1 mg/ml

种属反应性: Mouse

形式: Liquid

克隆性: Monoclonal

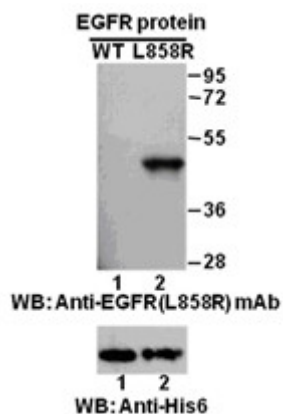
亚型: IgG1

纯化: Purified from ascites

成分: PBS (without Mg²⁺ and Ca²⁺), pH 7.4, 150 mM NaCl, 50% glycerol

种属反应性: Recognizes EGFR(L858R), but not wild type EGFR from vertebrates.

储存条件: Store at -20°C. Avoid repeated freezing and thawing.



蛋白质印迹:

Immunohistochemical analysis of paraffin-embedded human NSCLC tissue with anti-EGFR(L858R) monoclonal antibody

FOR RESEARCH USE ONLY. NOT FOR DIAGNOSTIC APPLICATIONS

(货号:26082). Tissue samples were fixed with formaldehyde and blocked with 1% serum for 15 min at 37 °C. Antigen retrieval was by heat mediation in citrate buffer (pH6). Samples were then incubated with primary antibody (1:400) overnight at 4°C. A HRP-conjugated Goat anti-mouse IgG (dilution 1:100) was used as secondary antibody.