

## EGFR(E746-A750)DEL

产品名称: EGFR(E746-A750)del) 小鼠单抗

货号: 26235

基因符号: EGFR/HER1/ERBB1

描述: EGFR(E746-A750)del 小鼠单抗

背景: EGFR is a receptor tyrosine kinase binding ligands of the EGF family and activating several signaling cascades to convert extracellular cues into appropriate cellular responses. It activates at least 4 major downstream signaling cascades including the RAS-RAF-MEK-ERK, PI3 kinase-AKT, PLCgamma-PKC and STATs modules. Defects in EGFR are associated with lung cancer (LNCR).

免疫原: A synthetic peptide from the internal region of EGFR which includes the deletion of E746-A750, human origin.

经过测试的应用: ELISA, WB

推荐稀释比:

ELISA: 1:1000-1:5000

WB: 1:500-1:1000

**Concentration:** 1 mg/ml

种属反应性: Mouse

形式: Liquid

克隆性: Monoclonal

亚型:

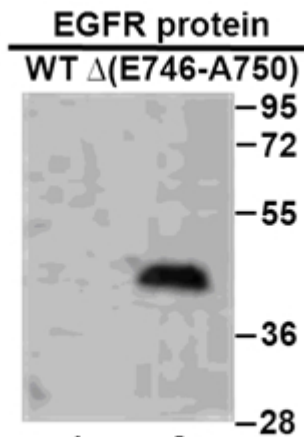
纯化: Purified from ascites

成分: PBS (without Mg<sup>2+</sup> and Ca<sup>2+</sup>), pH 7.4, 150 mM NaCl, 50% glycerol

种属反应性: Recognizes EGFR(E746-A750), but not wild type EGFR of vertebrates.

储存条件: Store at -20°C. Avoid freeze/thaw cycles

蛋白质印迹:



WB: Anti- EGFR  $\Delta$ (E746-A750) mAb

### Western blot analysis of recombinant EGFR(E746-A750) and wild type proteins.

Purified His-tagged EGFR(E746-A750)del protein (aa 702-987) and wild type protein (aa 702-987) were blotted with anti- EGFR(E746-A750)del mouse antibody (货号:26235).