

## CXCR5 (DMC679) IGG1 CHIMERIC MAB

货号: 28277

产品全名: CXCR5(DMC679) IgG1 Chimeric 单抗

基因符号 Blr1; CXCR5; CXCR-5; GPCR6; MDR15

描述: CXCR5 antibody(DMC679) IgG1 Chimeric 单抗

背景: Cytokine receptor that binds to B-lymphocyte chemoattractant (BLC). Involved in B-cell migration into B-cell follicles of spleen and Peyer patches but not into those of mesenteric or peripheral lymph nodes.[UniProtKB:Swiss-Prot Function]

经过测试的应用: Flow Cyt

推荐稀释比: Flow Cyt 1:100

种属反应性: Rabbit

亚型: Rabbit:Human Fc chimeric IgG1

纯化: Purified from cell culture supernatant by affinity chromatography

种属反应性: 人 CXCR5

成分: Lyophilized from sterile PBS, pH 7.4. 5% - 8% trehalose is added as protectants before lyophilization.

储存和运输: Store at -20°C to -80°C for 12 months in lyophilized form.

After reconstitution, if not intended for use within a month, aliquot and store at -80°C (Avoid repeated freezing and thawing).

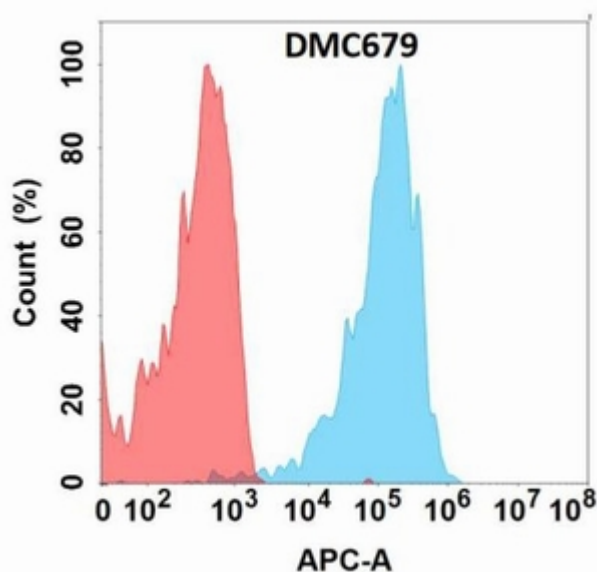


Figure 1. Flow cytometry analysis with Anti-CXCR5(DMC679) on Expi293 cells transfected with human CXCR5(Blue histogram) or Expi293 transfected with irrelevant protein (Red histogram).



# Product Description

Pioneering GTPase and Oncogene Product Development since 2010

---