

## CSPG4 (DMC466) IGG1 CHIMERIC MAB

货号: 28242

产品全名: CSPG4(DMC466) IgG1 Chimeric 单抗

基因符号 CSPG4A; HMW-MAA; MCSP; MCSPG; MEL-CSPG; MSK16; NG2

描述: CSPG4 antibody(DMC466) IgG1 Chimeric 单抗

背景: A human melanoma-associated chondroitin sulfate proteoglycan plays a role in stabilizing cell-substratum interactions during early events of melanoma cell spreading on endothelial basement membranes. CSPG4 represents an integral membrane chondroitin sulfate proteoglycan expressed by human malignant melanoma cells. [provided by RefSeq; Jul 2008]

经过测试的应用: Flow Cyt

推荐稀释比: Flow Cyt 1:100

种属反应性: Rabbit

亚型: Rabbit:Human Fc chimeric IgG1

纯化: Purified from cell culture supernatant by affinity chromatography

种属反应性: 人 CSPG4

成分: Lyophilized from sterile PBS, pH 7.4. 5 % – 8% trehalose is added as protectants before lyophilization.

储存和运输: Store at -20°C to -80°C for 12 months in lyophilized form. After reconstitution, if not intended for use within a month, aliquot and store at -80°C (Avoid repeated freezing and thawing).

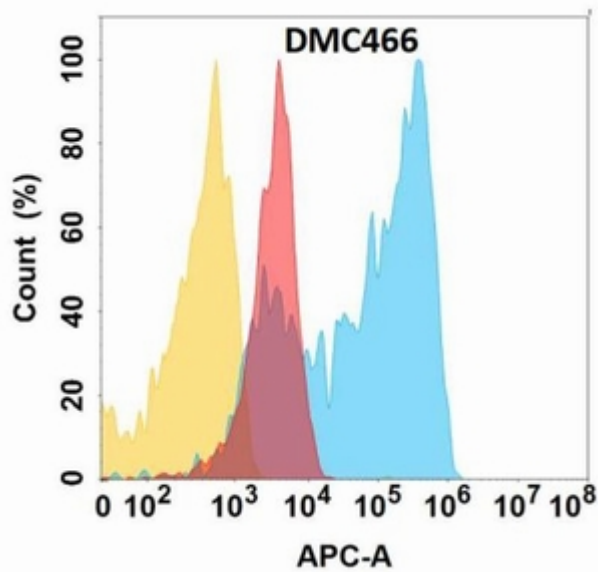


Figure 1. CSPG4 protein is highly expressed on the surface of Expi293 cell membrane. Flow cytometry analysis with Anti-CSPG4 (DMC466) on Expi293 cells transfected with human CSPG4 (Blue histogram) or Expi293 transfected with irrelevant protein (Red histogram), and Isotype antibody on Expi293 transfected with irrelevant protein (Orange histogram).