

## CDH6 (DMC6765) IGG1 CHIMERIC MAB

货号: 28276

产品全名: CDH6(DMC6765) IgG1 Chimeric 单抗

基因符号 CDH6; K-cadherin

描述: CDH6 antibody(DMC6765) IgG1 Chimeric 单抗

背景: This gene encodes a member of the cadherin superfamily.

Cadherins are membrane glycoproteins that mediate homophilic cell-cell adhesion and play critical roles in cell differentiation and morphogenesis.

The encoded protein is a type II cadherin and may play a role in kidney development as well as endometrium and placenta formation. Decreased expression of this gene may be associated with tumor growth and metastasis. [provided by RefSeq; May 2011]

经过测试的应用: Flow Cyt

推荐稀释比: Flow Cyt 1:100

种属反应性: Rabbit

亚型: Rabbit:Human Fc chimeric IgG1

纯化: Purified from cell culture supernatant by affinity chromatography

种属反应性: 人 CDH6

成分: Lyophilized from sterile PBS, pH 7.4. 5 % – 8% trehalose is added as protectants before lyophilization.

储存和运输: Store at -20°C to -80°C for 12 months in lyophilized form.

After reconstitution, if not intended for use within a month, aliquot and store at -80°C (Avoid repeated freezing and thawing).

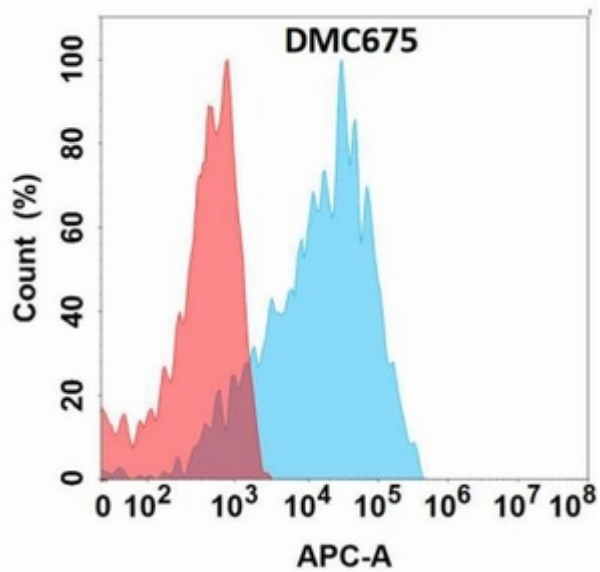


Figure 1. Flow cytometry analysis with Anti-CDH6(DMC675) on Expi293 cells transfected with human CDH6(Blue histogram) or Expi293 transfected with irrelevant protein (Red histogram).