

## CDH23 (DMC486) IGG1 CHIMERIC MAB

货号: 28262

产品全名: CDH23(DMC486) IgG1 Chimeric 单抗

基因符号 BLAST-2; CD23; CD23A; CLEC4J; FCE2; IGEBF

描述: CDH23 antibody(DMC486) IgG1 Chimeric 单抗

背景: The protein encoded by this gene is a B-cell specific antigen; and a low-affinity receptor for IgE. It has essential roles in B cell growth and differentiation; and the regulation of IgE production. This protein also exists as a soluble secreted form; then functioning as a potent mitogenic growth factor. Alternatively spliced transcript variants encoding different isoforms have been described for this gene.[provided by RefSeq; Jul 2011]

经过测试的应用: Flow Cyt

推荐稀释比: Flow Cyt 1:100

种属反应性: Rabbit

亚型: Rabbit:Human Fc chimeric IgG1

纯化: Purified from cell culture supernatant by affinity chromatography

种属反应性: 人 CD23

成分: Lyophilized from sterile PBS, pH 7.4. 5 % – 8% trehalose is added as protectants before lyophilization.

储存和运输: Store at -20°C to -80°C for 12 months in lyophilized form.

After reconstitution, if not intended for use within a month, aliquot and store at -80°C (Avoid repeated freezing and thawing).

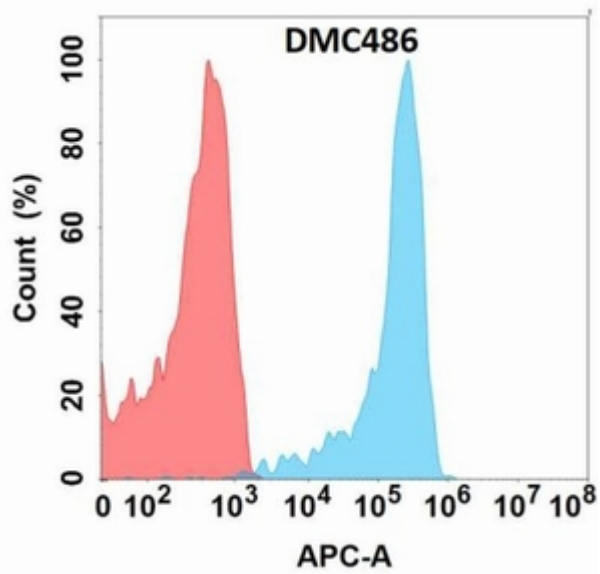


Figure 1. Flow cytometry analysis with Anti-CD23 (DMC486) on Expi293 cells transfected with human CD23 (Blue histogram) or Expi293 transfected with irrelevant protein (Red histogram).