

## CDC42 MAB

产品名称: Cdc42 小鼠单抗

货号: 26008

基因符号: Cdc42

描述: Cdc42 小鼠单抗

背景: Small GTPases are a super-family of cellular signaling regulators. Cdc42 belongs to the Rho sub-family of GTPases that regulate cell motility, cell division, and gene transcription. GTP binding increases the activity of Cdc42, and the hydrolysis of GTP to GDP renders it inactive. GTP hydrolysis is aided by GTPase activating proteins (GAPs), while exchange of GDP for GTP is facilitated by guanine nucleotide exchange factors (GEFs).

免疫原: Recombinant full length protein of Cdc42

经过测试的应用: ELISA, WB, IHC

推荐稀释比: ELISA 1:100-1:5000, WB 1:100-1:2000

**Concentration:** 1 mg/ml

种属反应性: Mouse

形式: Liquid

克隆性: Monoclonal

亚型: IgG

纯化: Purified from ascites

成分: PBS (without  $Mg^{2+}$  and  $Ca^{2+}$ ), pH 7.4, 150 mM NaCl, 50% glycerol

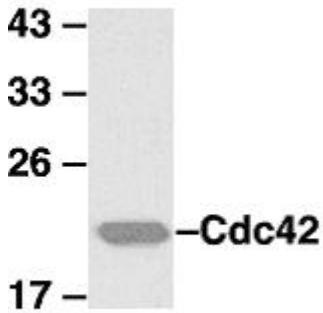
种属反应性: Cdc42 antibody recognizes Cdc42 from vertebrates.

储存条件: Store at  $-20^{\circ}C$ . Avoid repeated freezing and thawing

蛋白质印迹:

MEF cells

kD



**WB: anti-Cdc42 mAb**

**Western blot analysis of Cdc42 proteins.**

MEF whole-cell lysate was used for western blot with the monoclonal anti-Cdc42 antibody (货号: 26008).