

CD34 (DM136) RABBIT MAB

货号: 28481

产品全名: CD34(DM136) 兔单克隆抗体

基因符号 CD34

描述: CD34 antibody(DM136) 兔单克隆抗体

背景: The protein encoded by this gene may play a role in the attachment of stem cells to the bone marrow extracellular matrix or to stromal cells. This single-pass membrane protein is highly glycosylated and phosphorylated by protein kinase C. Two transcript variants encoding different isoforms have been found for this gene.

经过测试的应用: ELISA; Flow Cyt

推荐稀释比: ELISA 1:5000-10000; Flow Cyt 1:100

种属反应性: Rabbit

亚型: Rabbit IgG

纯化: Purified from cell culture supernatant by affinity chromatography

种属反应性: 人 CD34

成分: Lyophilized from sterile PBS, pH 7.4. 5% - 8% trehalose is added as protectants before lyophilization.

储存和运输: Store at -20°C to -80°C for 12 months in lyophilized form. After reconstitution, if not intended for use within a month, aliquot and store at -80°C (Avoid repeated freezing and thawing).

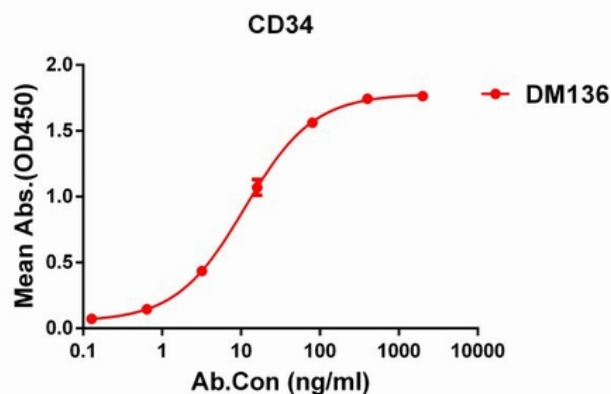


Figure 1. ELISA plate pre-coated by $1\ \mu\text{g}/\text{ml}$ ($100\ \mu\text{l}/\text{well}$) Human CD34 protein, His tagged protein 11280 can bind Rabbit anti-CD34 monoclonal antibody (clone: DM136) in a linear range of 0.1-12 ng/ml.

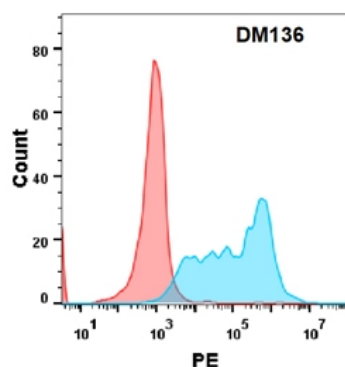


Figure 2. Flow cytometry analysis with Anti-CD34 (DM136) on Expi293 cells transfected with human CD34 (Blue histogram) or Expi293 transfected with irrelevant protein (Red histogram).