

## CD30 (DM103) RABBIT MAB

货号: 28448

产品全名: CD30(DM103) 兔单克隆抗体

基因符号 TNFRSF8;CD30;DIS166E;Ki-1

描述: CD30 antibody(DM103) 兔单克隆抗体

背景: The protein encoded by this gene is a member of the TNF-receptor superfamily. This receptor is expressed by activated; but not by resting; T and B cells. TRAF2 and TRAF5 can interact with this receptor; and mediate the signal transduction that leads to the activation of NF-kappaB. This receptor is a positive regulator of apoptosis; and also has been shown to limit the proliferative potential of autoreactive CD8 effector T cells and protect the body against autoimmunity. Two alternatively spliced transcript variants of this gene encoding distinct isoforms have been reported.

经过测试的应用: ELISA; Flow Cyt

推荐稀释比: ELISA 1:5000-10000; Flow Cyt 1:100

种属反应性: Rabbit

亚型: Rabbit IgG

纯化: Purified from cell culture supernatant by affinity chromatography

种属反应性: 人 CD30

成分: Lyophilized from sterile PBS, pH 7.4. 5% - 8% trehalose is added as protectants before lyophilization.

储存和运输: Store at -20°C to -80°C for 12 months in lyophilized form. After reconstitution, if not intended for use within a month, aliquot and store at -80°C (Avoid repeated freezing and thawing).

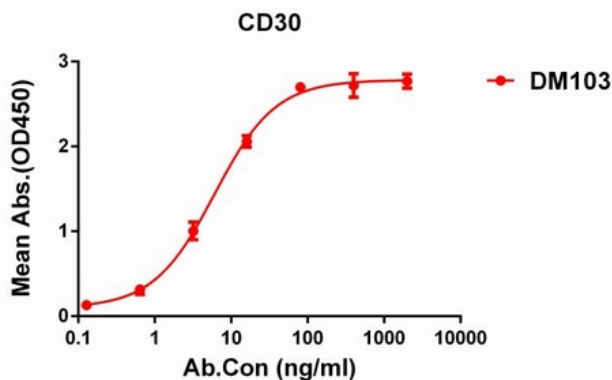


Figure 1. ELISA plate pre-coated by 2  $\mu$ g/ml (100  $\mu$ l/well) Human CD30 protein, His tagged protein 11291 can bind Rabbit anti-CD30 monoclonal antibody (clone: DM103) in a linear range of 0.12-60 ng/ml.

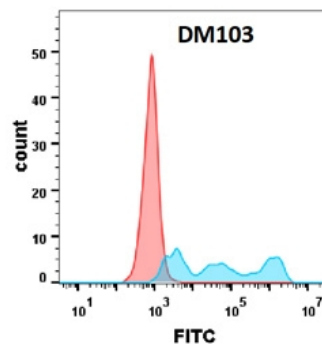


Figure 2. Flow cytometry analysis with Anti-CD30 (DM103) on Expi293 cells transfected with human CD30 (Blue histogram) or Expi293 transfected with irrelevant protein (Red histogram).