

CD2 (DMC423) IGG1 CHIMERIC MAB

货号: 28217

产品全名: CD2(DMC423) IgG1 Chimeric 单抗

基因符号 LFA-2; SRBC; T11

描述: CD2 antibody(DMC423) IgG1 Chimeric 单抗

背景: The protein encoded by this gene is a surface antigen found on all peripheral blood T-cells. The encoded protein interacts with LFA3 (CD58) on antigen presenting cells to optimize immune recognition. A locus control region (LCR) has been found in the 3' flanking sequence of this gene.

经过测试的应用: Flow Cyt

推荐稀释比: Flow Cyt 1:100

种属反应性: Rabbit

亚型: Rabbit:Human Fc chimeric IgG1

纯化: Purified from cell culture supernatant by affinity chromatography

种属反应性: 人 CD2

成分: Lyophilized from sterile PBS, pH 7.4. 5 % – 8% trehalose is added as protectants before lyophilization.

储存和运输: Store at -20°C to -80°C for 12 months in lyophilized form.

After reconstitution, if not intended for use within a month, aliquot and store at -80°C (Avoid repeated freezing and thawing).

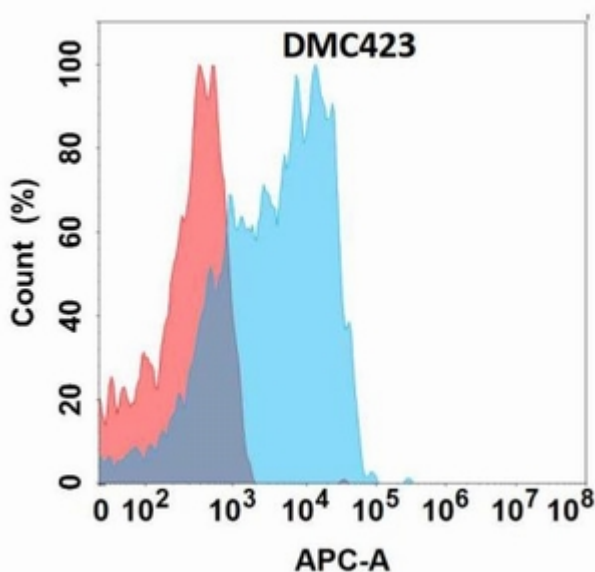


Figure 1. Flow cytometry analysis with Anti-CD2 (DMC423) on Expi293 cells transfected with human CD2 (Blue histogram) or Expi293 transfected with irrelevant protein (Red histogram).



Product Description

Pioneering GTPase and Oncogene Product Development since 2010
