

## BRAF PAB

产品名称: BRaf 兔多抗

货号: 21271

基因符号: B-RAF, B-RAF1, RAFB1

描述: BRaf 兔多抗

背景: B-Raf is a member of the Raf family of Ser/Thr protein kinases. It functions downstream of Ras to regulate the MAP kinase signaling pathway. Mutations in the B-RAF gene cause diseases. Inherited mutations in B-RAF cause cardiofaciocutaneous syndrome. Acquired mutations in B-RAF have been found in cancers.

免疫原: Purified B-Raf protein, human origin.

经过测试的应用: ELISA, WB, IHC

推荐稀释比:

ELISA: 1:1000-1:5000

WB: 1:100-1:1000

IHC: 1:50-1:200

**Concentration:** 0.1mg/ml

种属反应性: Rabbit

形式: Liquid

克隆性: Polyclonal

亚型:

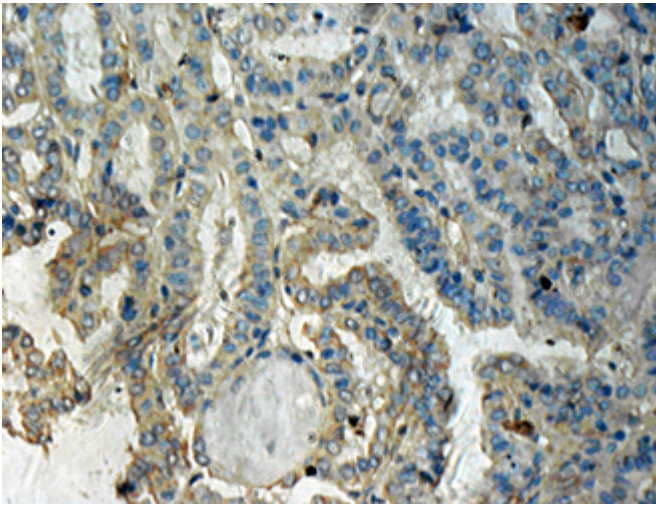
纯化: Purified from serum

成分: PBS (without  $Mg^{2+}$  and  $Ca^{2+}$ ), pH 7.4, 150 mM NaCl, 50% glycerol

种属反应性: Recognizes B-Raf of vertebrates.

储存条件: Store at  $-20^{\circ}C$ . Avoid repeated freezing and thawing

## Immunohistochemistry:



Immunohistochemical analysis of paraffin-embedded human thyroid cancer tissue with anti- B-Raf 兔多抗 (货号:21271). Tissue samples were fixed with formaldehyde and blocked with 1% serum for 15 min at 37 °C. Antigen retrieval was by heat mediation in citrate buffer (pH6). Samples were then incubated with primary antibody (1:50 dilution) overnight at 4°C. A HRP-conjugated Goat anti-mouse IgG (1:50 dilution) was used as secondary antibody.