

## BAG1 PAB

产品名称: Bag1 兔多抗

货号: 21231

基因符号: BAG1

描述: Bag1 兔多抗

背景: BAG family molecular chaperone regulator 1 is a protein that in humans is encoded by the BAG1 gene. It binds to oncogene BCL2, by which enhances the anti apoptotic effects of BCL2 and represents a link between growth factor receptors and anti apoptotic mechanisms. BAG gene has been implicated in age related neurodegenerative diseases as Alzheimer's. It has been demonstrated that BAG1 and BAG 3 regulate the proteasomal and lysosomal protein elimination pathways, respectively.

免疫原: A synthetic peptide from the central region of Bag1 protein, human origin.

经过测试的应用: ELISA, WB, IHC

推荐稀释比:

ELISA: 1:500-1:5000

WB: 1:200-1:2000

IHC: 1:20-1:200

**Concentration:** 0.2 mg/ml

种属反应性: Rabbit

形式: Liquid

克隆性: Polyclonal

亚型: IgG

纯化: Purified from serum

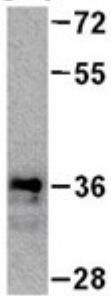
成分: PBS (without  $Mg^{2+}$  and  $Ca^{2+}$ ), pH 7.4, 150 mM NaCl, 50% glycerol

种属反应性: Bag1 兔多抗 recognizes Bag1 from vertebrates.

储存条件: Store at  $-20^{\circ}C$ . Avoid repeated freezing and thawing.

蛋白质印迹:

Bag1 protein



WB: Anti-Bag1 pAb

**Western blot analysis of recombinant Bag1 protein.**

Purified full length His-tagged Bag1 protein was blotted with Anti-Bag1 兔多抗 (货号:21231).