

## ARL3-GTP

产品名称: Arl3-GTP 小鼠单抗

货号: 货号:: 26925

基因符号: ARL3

描述: Arl3-GTP 小鼠单抗

背景: Arl3 (Arf-like 3) is an Arf family protein. Arl3 binds microtubules to alter specific aspects of cytokinesis. It has been proposed that retinitis pigmentosa 2 functions in concert with Arl3 to link the cell membrane and the cytoskeleton in photoreceptors as part of the cell signaling or vesicular transport machinery.

免疫原: Recombinant Arl3 protein (active form)

经过测试的应用: IP, IHC and IF (Not applicable for WB since WB denatures the GTPase)

推荐稀释比: IP: 1 µg for 1~2 mg total cellular proteins IHC, IF: 1:50~1:250

**Concentration:** 1 mg/ml

种属反应性: Mouse

形式: Liquid

克隆性: Monoclonal

亚型: IgG

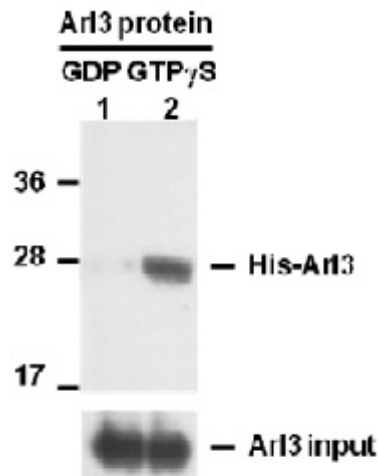
纯化: Purified from ascites

**Preservative:** No

成分: PBS (without  $Mg^{2+}$  and  $Ca^{2+}$ ), pH 7.4, 150 mM NaCl, 50% glycerol

种属反应性: Arl3 antibody recognizes active Arl3-GTP from vertebrates.

储存条件: Store at -20°C. Avoid repeated freezing and thawing



IP: anti-active Arl3 mAb

IB: anti-Arl3 mAb

免疫沉淀/蛋白质印迹:

## Arl3 Activation

**Assay.** Purified His-tagged Arl3 proteins (货号:10152) were immunoprecipitated with the anti-active Arl3 monoclonal antibody (货号:26925) after treated with GDP (lane 1) or GTP $\gamma$ S (lane 2), and was blotted with anti-Arl3 monoclonal antibody (货号:21070). Input controls are shown in the bottom panel.