

VINCULIN RABBIT MAB

货号: N263072

产品全名: Vinculin 兔单克隆抗体

基因符号 VCL; Vinculin; Metavinculin

UNIPROT ID: P18206

背景: Vinculin is a cytoskeletal protein that plays an important role in the regulation of focal adhesions and embryonic development. Three structural vinculin domains include an amino-terminal head, a short, flexible proline-rich region and a carboxy-terminal tail. In the inactive state, the head and tail domains of vinculin interact to form a closed confirmation. The open and active form of vinculin translocates to focal adhesions where it is thought to be involved in anchoring F-actin to the membrane and regulation of cell migration.

抗原: A synthetic peptide of human Vinculin

经过测试的应用: WB, ICC/IF, IP

推荐稀释比: WB: 1/500-1/1000 IF: 1/50-1/200 IP: 1/20

种属反应性: Rabbit

克隆性: Rabbit Monoclonal

克隆编号: R04-8F9

分子量: Calculated MW: 124 kDa; Observed MW: 124 kDa

亚型: IgG

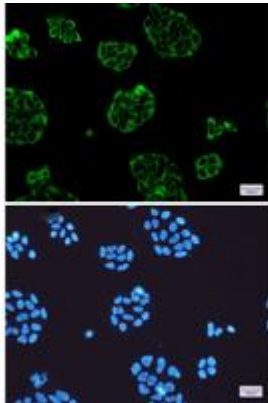
纯化: Affinity Purified

种属反应性: Human, Mouse and Rat

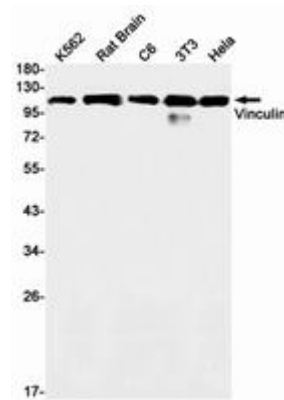
成分: PBS (without Mg²⁺ and Ca²⁺), pH 7.3 containing 50% glycerol, 0.5% BSA and 0.02% sodium azide

研究领域: Signal Transduction

储存和运输: Store at -20°C. Avoid repeated freezing and thawing



Immunocytochemistry analysis of Vinculin (green) in HeLa using Vinculin antibody, and DAPI (blue)



Western blot analysis of Vinculin in K562, rat Brain, C6, 3T3, HeLa lysates using Vinculin antibody.