

UBA2 RABBIT MAB

货号: N263045

产品全名: UBA2 兔单克隆抗体

基因符号 UBA2; SAE2; UBLE1B; HRIHFB2115; SUMO-activating enzyme subunit 2; Anthracycline-associated resistance ARX; Ubiquitin-like 1-activating enzyme E1B

UNIPROT ID: Q9UBT2

背景: The heterodimer acts as a E1 ligase for SUMO1, SUMO2, SUMO3, and probably SUMO4. It mediates ATP-dependent activation of SUMO proteins followed by formation of a thioester bond between a SUMO protein and a conserved active site cysteine residue on UBA2/SAE2.

抗原: A synthetic peptide of human UBA2

经过测试的应用: WB, ICC/IF, IP

推荐稀释比: WB: 1/500-1/1000 IF: 1/50-1/200 IP: 1/20

种属反应性: Rabbit

克隆性: Rabbit Monoclonal

克隆编号: R08-6D4

分子量: Calculated MW: 71 kDa; Observed MW: 90 kDa

亚型: IgG

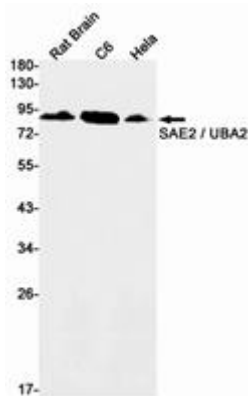
纯化: Affinity Purified

种属反应性: Human, Rat

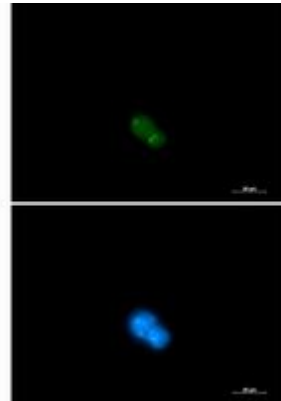
成分: PBS (without Mg²⁺ and Ca²⁺), pH 7.3 containing 50% glycerol, 0.5% BSA and 0.02% sodium azide

研究领域: Cell Biology

储存和运输: Store at -20°C. Avoid repeated freezing and thawing



Western blot analysis of SAE2 / UBA2 in rat Brain, C6, HeLa lysates using SAE2 / UBA2 antibody.



Immunocytochemistry analysis of UBA2 (green) in 293 using UBA2 antibody, and DAPI (blue).