

TUBERIN RABBIT MAB

货号: N263590

产品全名: Tuberin 兔单克隆抗体

基因符号 TSC2; Tuberous sclerosis 2 homolog protein; Tuberous sclerosis 2 protein; Tuberin; TSC4

UNIPROT ID: P49815

背景: Tuberin is a product of the TSC2 tumor suppressor gene and an important regulator of cell proliferation and tumor development. Mutations in either TSC2 or the related TSC1 (hamartin) gene cause tuberous sclerosis complex (TSC), an autosomal dominant disorder characterized by development of multiple, widespread non-malignant tumors. Tuberin is directly phosphorylated at Thr1462 by Akt/PKB. Phosphorylation at Thr1462 and Tyr1571 regulates tuberin-hamartin complexes and tuberin activity.

抗原: Recombinant protein of human Tuberin

经过测试的应用: WB,IP

推荐稀释比: WB: 1/500-1/1000 IP: 1/20

种属反应性: Rabbit

克隆性: Rabbit Monoclonal

克隆编号: R04-113

分子量: Calculated MW: 201 kDa; Observed MW: 201 kDa

亚型: IgG

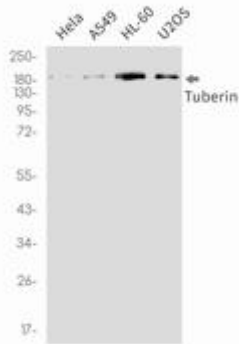
纯化: Affinity Purified

种属反应性: Human

成分: PBS (without Mg²⁺ and Ca²⁺), pH 7.3 containing 50% glycerol, 0.5% BSA and 0.02% sodium azide

研究领域: Cell Biology

储存和运输: Store at -20°C. Avoid repeated freezing and thawing



Western blot analysis of Tuberin in HeLa, A549, HL-60, U2OS lysates using Tuberin antibody.