

## TPX2 RABBIT MAB

货号: N263586

产品全名: TPX2 兔单克隆抗体

基因符号 DIL2; p100; DIL-2; HCTP4; FLS353; HCA519; REPP86; C20orf1;  
C20orf2; GD:C20orf1

**UNIPROT ID:** Q9ULW0

**背景:** Spindle assembly factor. Required for normal assembly of mitotic spindles. Required for normal assembly of microtubules during apoptosis. Required for chromatin and/or kinetochore dependent microtubule nucleation. Mediates AURKA localization to spindle microtubules. Activates AURKA by promoting its autophosphorylation at 'Thr-288' and protects this residue against dephosphorylation.

**抗原:** A synthetic peptide of human TPX2

**经过测试的应用:** WB,IHC-F,IHC-P,ICC/IF,IP

**推荐稀释比:** WB: 1/500-1/1000 IHC: 1/50-1/100 IF: 1/50-1/200 IP: 1/20

**种属反应性:** Rabbit

**克隆性:** Rabbit Monoclonal

**克隆编号:** R01-8A6

**分子量:** Calculated MW: 86 kDa; Observed MW: 100 kDa

**亚型:** IgG

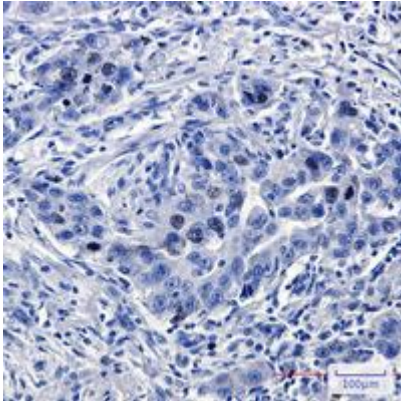
**纯化:** Affinity Purified

**种属反应性:** Human

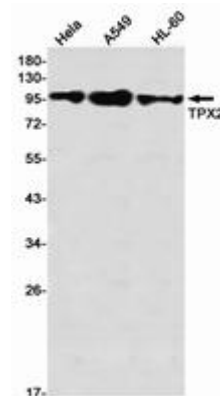
**成分:** PBS (without Mg<sup>2+</sup> and Ca<sup>2+</sup>), pH 7.3 containing 50% glycerol, 0.5% BSA and 0.02% sodium azide

**研究领域:** Cell Biology

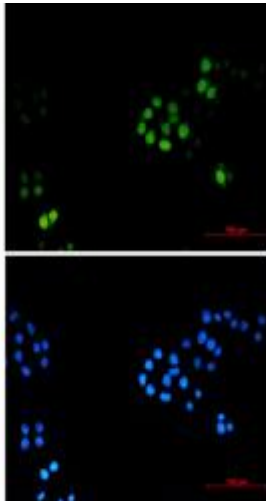
**储存和运输:** Store at -20°C. Avoid repeated freezing and thawing



Immunohistochemistry analysis of paraffin-embedded Human lung cancer using TPX2 antibody. High-pressure and temperature Sodium Citrate pH 6.0 was used for antigen retrieval.



Western blot analysis of TPX2 in HeLa, A549, HL-60 lysates using TPX2 antibody.



Immunocytochemistry analysis of TPX2 (green) in HeLa using TPX2 antibody, and DAPI (blue)