

## TOPOISOMERASE I RABBIT PAB

货号: N225698

产品全名: Topoisomerase I 兔多抗

基因符号 TOP1; DNA topoisomerase 1; DNA topoisomerase I

**UNIPROT ID:** P11387

**背景:** Releases the supercoiling and torsional tension of DNA introduced during the DNA replication and transcription by transiently cleaving and rejoining one strand of the DNA duplex. Introduces a single-strand break via transesterification at a target site in duplex DNA. The scissile phosphodiester is attacked by the catalytic tyrosine of the enzyme, resulting in the formation of a DNA-(3'-phosphotyrosyl)-enzyme intermediate and the expulsion of a 5'-OH DNA strand.

**抗原:** A synthesized peptide derived from human TOP1

**经过测试的应用:** WB,IHC-P,ICC/IF,FC

**推荐稀释比:** WB: 1/500-1/1000 IHC: 1/50-1/100 IF: 1/50-1/200 FC: 1/50-1/100

**种属反应性:** Rabbit

**克隆性:** Rabbit Polyclonal

**分子量:** Calculated MW: 91 kDa; Observed MW: 91 kDa

**亚型:** IgG

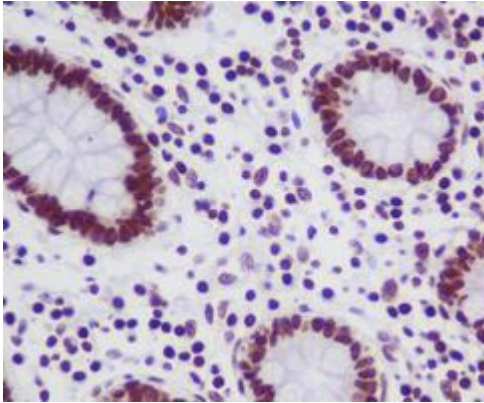
**纯化:** Affinity Chromatography

**种属反应性:** Human,Mouse

**成分:** PBS (without Mg<sup>2+</sup> and Ca<sup>2+</sup>), pH 7.3 containing 50% glycerol, 0.5% BSA and 0.02% sodium azide

**研究领域:** Epigenetics and Nuclear Signaling

**储存和运输:** Store at -20°C. Avoid repeated freezing and thawing



Immunohistochemistry analysis of paraffin-embedded Human colon using TOP1 antibody. High-pressure and temperature Sodium Citrate pH 6.0 was used for antigen retrieval.



Western blot analysis of TOP1 in Jurkat lysates using Topoisomerase I antibody.