

## TOLL-LIKE RECEPTOR 6 RABBIT PAB

货号: N225531

产品全名: Toll-Like Receptor 6 兔多抗

基因符号 Toll-like receptor 6; CD286

**UNIPROT ID:** Q9Y2C9

**背景:** The protein encoded by this gene is a member of the Toll-like receptor (TLR) family which plays a fundamental role in pathogen recognition and activation of innate immunity. TLRs are highly conserved from Drosophila to humans and share structural and functional similarities. They recognize pathogen-associated molecular patterns (PAMPs) that are expressed on infectious agents, and mediate the production of cytokines necessary for the development of effective immunity. The various TLRs exhibit different patterns of expression. This receptor functionally interacts with toll-like receptor 2 to mediate cellular response to bacterial lipoproteins. A Ser249Pro polymorphism in the extracellular domain of the encoded protein may be associated with an increased of asthma in some populations.

**抗原:** Recombinant Protein of TLR6

**经过测试的应用:** IHC-P

**推荐稀释比:** IHC: 1/50-1/100

**种属反应性:** Rabbit

**克隆性:** Rabbit Polyclonal

**分子量:** -

**亚型:** IgG

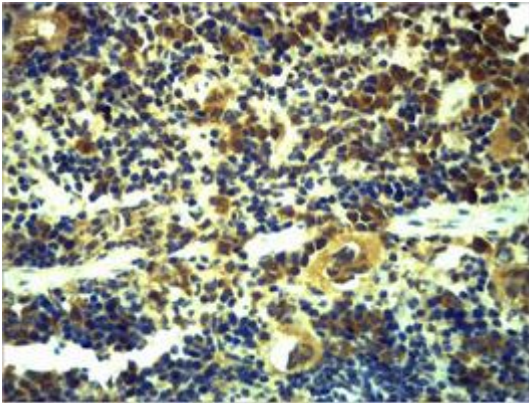
**纯化:** Affinity Purified

**种属反应性:** Human, Mouse and Rat

**成分:** PBS (without Mg<sup>2+</sup> and Ca<sup>2+</sup>), pH 7.3 containing 50% glycerol, 0.5% BSA and 0.02% sodium azide

**研究领域:** Immunology

**储存和运输:** Store at -20°C. Avoid repeated freezing and thawing



Immunohistochemistry analysis of paraffin-embedded mouse Spleen Tissue using Toll-Like Receptor 6 antibody. High-pressure and temperature Sodium Citrate pH 6.0 was used for antigen retrieval.