

## TOLL-LIKE RECEPTOR 13 RABBIT PAB

货号: N225530

产品全名: Toll-Like Receptor 13 兔多抗

基因符号 Toll-Like Receptor 13; Toll like receptor 13 antibody

**UNIPROT ID:** Q6R5N8

背景: Component of innate and adaptive immunity that recognizes and binds 23S rRNA from bacteria. TLRs (Toll-like receptors) control host immune response against pathogens through recognition of molecular patterns specific to microorganisms. Acts via MYD88 and TRAF6, leading to NF-kappa-B activation, cytokine secretion and the inflammatory response.

抗原: Recombinant Protein of TLR13

经过测试的应用: IHC-P

推荐稀释比: IHC: 1/50-1/100

种属反应性: Rabbit

克隆性: Rabbit Polyclonal

分子量: -

亚型: IgG

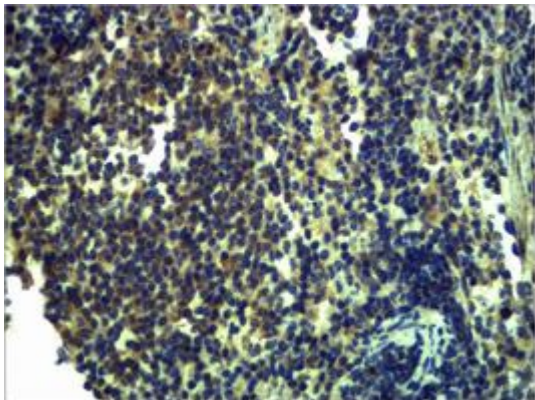
纯化: Affinity Purified

种属反应性: Human, Mouse and Rat

成分: PBS (without Mg<sup>2+</sup> and Ca<sup>2+</sup>), pH 7.3 containing 50% glycerol, 0.5% BSA and 0.02% sodium azide

研究领域: Immunology

储存和运输: Store at -20°C. Avoid repeated freezing and thawing



Immunohistochemistry analysis of paraffin-embedded mouse Spleen Tissue using Toll-Like Receptor 13 antibody. High-pressure and temperature Sodium Citrate pH 6.0 was used for antigen retrieval.



# Product Description

Pioneering GTPase and Oncogene Product Development since 2010

---