

TISSUE FACTOR PATHWAY INHIBITOR RABBIT MAB

货号: N263577

产品全名: Tissue Factor Pathway Inhibitor 兔单克隆抗体

基因符号 EPI; TFI; LACI; TFP11

UNIPROT ID: P10646

背景: Inhibits factor X ($X(a)$) directly and, in a Xa -dependent way, inhibits VIIa/tissue factor activity, presumably by forming a quaternary $Xa/LACI/VIIa/TF$ complex. It possesses an antithrombotic action and also the ability to associate with lipoproteins in plasma.

抗原: Recombinant protein of human TFPI

经过测试的应用: WB,IP

推荐稀释比: WB: 1/500-1/1000 IP: 1/20

种属反应性: Rabbit

克隆性: Rabbit Monoclonal

克隆编号: R07-6A6

分子量: Calculated MW: 35 kDa; Observed MW: 40-55 kDa

亚型: IgG

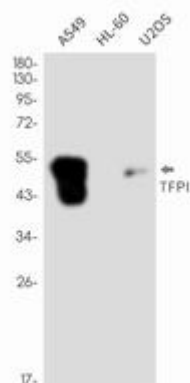
纯化: Affinity Purified

种属反应性: Human

成分: PBS (without Mg^{2+} and Ca^{2+}), pH 7.3 containing 50% glycerol, 0.5% BSA and 0.02% sodium azide

研究领域: Cardiovascular

储存和运输: Store at $-20^{\circ}C$. Avoid repeated freezing and thawing



Western blot analysis of TFPI in A549, HL-60, U2OS lysates using TFPI antibody.



Product Description

Pioneering GTPase and Oncogene Product Development since 2010
