

TIMELESS RABBIT MAB

货号: N262996

产品全名: TIMELESS 兔单克隆抗体

基因符号 hTIM; TIM; TIM1; Timeless; timeless circadian clock 1; TIMELESS1

UNIPROT ID: Q9UNSI

背景: Required for normal progression of S-phase. Involved in the circadian rhythm autoregulatory loop. Negatively regulates CLOCK-NPAS2/BMAL1-induced transactivation of PER1 possibly via translocation of PER1 into the nucleus.

抗原: A synthetic peptide of human Timeless

经过测试的应用: WB,IHC-F,IHC-P,ICC/IF

推荐稀释比: WB: 1/500-1/1000 IHC: 1/50-1/100 IF: 1/50-1/200

种属反应性: Rabbit

克隆性: Rabbit Monoclonal

克隆编号: R01-7H7

分子量: Calculated MW: 139 kDa; Observed MW: 150 kDa

亚型: IgG

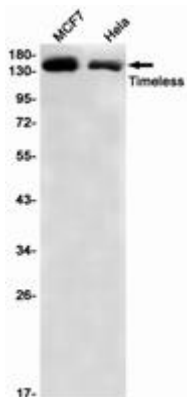
纯化: Affinity Purified

种属反应性: Human

成分: PBS (without Mg²⁺ and Ca²⁺), pH 7.3 containing 50% glycerol, 0.5% BSA and 0.02% sodium azide

研究领域: Epigenetics and Nuclear Signaling

储存和运输: Store at -20°C. Avoid repeated freezing and thawing



Western blot analysis of Timeless in MCF-7, HeLa lysates using TIMELESS antibody.



Product Description

Pioneering GTPase and Oncogene Product Development since 2010
