

THYMIDINE KINASE RABBIT PAB

货号: N225773

产品全名: Thymidine Kinase 兔多抗

基因符号 EC 2.7.1.21; KITH; TK-1; TK1; Thymidine kinase 1; cytosolic

UNIPROT ID: P04183

背景: TK is a cytosolic thymidine kinase. Phosphorylated during mitosis. Its enzymatic activity is high in proliferating cells and peaks during the S-phase of the cell cycle; it is very low in resting cells.

抗原: A synthesized peptide derived from human Thymidine Kinase 1

经过测试的应用: WB,IHC-P,ICC/IF,IP,FC

推荐稀释比: WB: 1/500-1/1000 IHC: 1/50-1/100 IF: 1/50-1/200 IP: 1/20 FC: 1/50-1/100

种属反应性: Rabbit

克隆性: Rabbit Polyclonal

分子量: Calculated MW: 25 kDa; Observed MW: 25 kDa

亚型: IgG

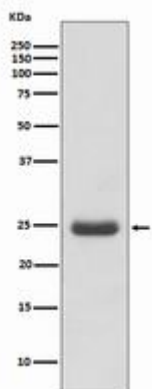
纯化: Affinity Chromatography

种属反应性: Human

成分: PBS (without Mg²⁺ and Ca²⁺), pH 7.3 containing 50% glycerol, 0.5% BSA and 0.02% sodium azide

研究领域: Epigenetics and Nuclear Signaling

储存和运输: Store at -20°C. Avoid repeated freezing and thawing



Western blot analysis of Thymidine Kinase 1 in Molt4 lysates using Thymidine Kinase antibody.